

Trombone
Octatonic Scales
1 Octave

Posaune
Oktatonischen Tonleitern
1 Oktave

Trombone
Gammes Octatoniques
1 Octave

C Octatonic (Half-Whole)



C Octatonic (Whole-Half)



C# Octatonic (Half-Whole)



C# Octatonic (Whole-Half)



D Octatonic (Half-Whole)



D Octatonic (Whole-Half)



E-flat Octatonic (Half-Whole)



E-flat Octatonic (Whole-Half)



E Octatonic (Half-Whole)



E Octatonic (Whole-Half)



F Octatonic (Half-Whole)



F Octatonic (Whole-Half)



Trombone
Octatonic Scales
1 Octave

Posaune
Oktatonischen Tonleitern
1 Oktave

Trombone
Gammes Octatoniques
1 Octave

F# Octatonic (Half-Whole)

F# Octatonic (Whole-Half)



G Octatonic (Half-Whole)

G Octatonic (Whole-Half)



A♭ Octatonic (Half-Whole)

A♭ Octatonic (Whole-Half)



A Octatonic (Half-Whole)

A Octatonic (Whole-Half)



B♭ Octatonic (Half-Whole)

B♭ Octatonic (Whole-Half)



B Octatonic (Half-Whole)

B Octatonic (Whole-Half)



Trombone
Octatonic Scales
2 Octaves

Posaune
Oktatonischen Tonleitern
2 Oktaven

Trombone
Gammes Octatoniques
2 Octaves

C Octatonic (Half-Whole)



C Octatonic (Whole-Half)



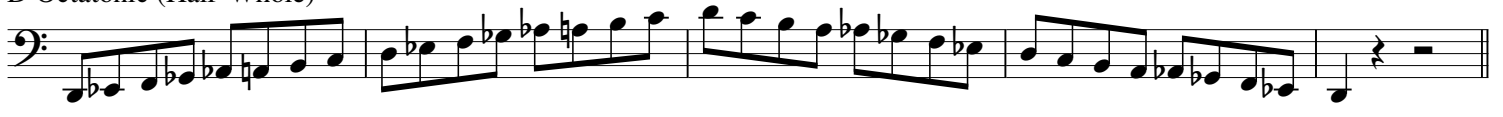
C# Octatonic (Half-Whole)



C# Octatonic (Whole-Half)



D Octatonic (Half-Whole)



D Octatonic (Whole-Half)



Eb Octatonic (Half-Whole)



Eb Octatonic (Whole-Half)



Trombone
Gammes Octatoniques
2 Octaves

The bass line of 'The Rose Tree' is written on a single staff with a bass clef. It consists of six measures. The first measure contains a quarter note G2, an eighth note A2, a quarter note B2, and an eighth note C3. The second measure contains a quarter note D3, an eighth note E3, a quarter note F3, and an eighth note G3. The third measure contains a quarter note A3, an eighth note B3, a quarter note C4, and an eighth note D4. The fourth measure contains a quarter note E4, an eighth note F4, a quarter note G4, and an eighth note A4. The fifth measure contains a quarter note B4, an eighth note C5, a quarter note D5, and an eighth note E5. The sixth measure contains a quarter note F5, an eighth note G5, a quarter note A5, and an eighth note B5. The piece ends with a double bar line.

The bass line of 'The Rose Tree' is written on a single staff with a bass clef. It consists of four measures. The first measure contains a half note G2, a quarter note A2, a quarter note B2, and a half note C3. The second measure contains a half note D3, a quarter note E3, a quarter note F3, and a half note G3. The third measure contains a half note A3, a quarter note B3, a quarter note C4, and a half note D4. The fourth measure contains a half note E4, a quarter note F4, a quarter note G4, and a half note A4. The piece ends with a double bar line.

The bass line of 'The Rose Tree' is written on a single staff with a bass clef. It consists of four measures. The first measure contains a quarter note G2, an eighth note A2, a quarter note B2, and a quarter note C3. The second measure contains a quarter note D3, an eighth note E3, a quarter note F3, and a quarter note G3. The third measure contains a quarter note A3, an eighth note B3, a quarter note C4, and a quarter note D4. The fourth measure contains a quarter note E4, an eighth note F4, a quarter note G4, and a quarter note A4. The piece ends with a double bar line.

The bass line of 'The Rose Tree' is written on a single staff with a bass clef. It consists of six measures. The first measure contains a quarter note G2, an eighth note A2, and a quarter note B2. The second measure contains a quarter note C3, an eighth note D3, and a quarter note E3. The third measure contains a quarter note F3, an eighth note G3, and a quarter note A3. The fourth measure contains a quarter note B3, an eighth note C4, and a quarter note D4. The fifth measure contains a quarter note E4, an eighth note F4, and a quarter note G4. The sixth measure contains a quarter note A4, an eighth note B4, and a quarter note C5. The piece ends with a double bar line.

The bass line of 'The Rose Tree' is written on a single staff with a bass clef. It consists of five measures. The first measure contains a half note G2, a quarter note A2, and a quarter note B2. The second measure contains a half note C3, a quarter note D3, and a quarter note E3. The third measure contains a half note F3, a quarter note G3, and a quarter note A3. The fourth measure contains a half note B3, a quarter note C4, and a quarter note D4. The fifth measure contains a half note E4, a quarter note F4, and a quarter note G4. The key signature has one sharp (F#) and the time signature is 3/4.

The bass line of 'The Rose Tree' is written on a single staff with a bass clef. It consists of four measures. The first measure contains a quarter note G2, an eighth note A2, a quarter note B2, and an eighth note C3. The second measure contains a quarter note D3, an eighth note E3, a quarter note F3, and an eighth note G3. The third measure contains a quarter note A3, an eighth note B3, a quarter note C4, and an eighth note D4. The fourth measure contains a quarter note E4, an eighth note F4, a quarter note G4, and an eighth note A4. The piece ends with a double bar line.

Musical notation for the bass line of 'The Rose Tree'. The key signature has one sharp (F#). The melody consists of six measures: 1. F#2, G#2, A2, B2, C3, D3, E3, F#3. 2. G#3, A3, B3, C4, D4, E4, F#4, G#4. 3. A4, B4, C5, D5, E5, F#5, G#5, A5. 4. B5, C6, D6, E6, F#6, G#6, A6, B6. 5. C7, D7, E7, F#7, G#7, A7, B7, C8. 6. D8, E8, F#8, G#8, A8, B8, C9, D9. The notation includes a treble clef, a key signature of one sharp, and a final double bar line.

The bass line of 'The Rose Tree' is written on a single staff with a bass clef. It consists of four measures. The first measure contains a quarter note G2, an eighth note F2, a quarter note E2, and an eighth note D2. The second measure contains a quarter note C2, an eighth note B1, a quarter note A1, and an eighth note G1. The third measure contains a quarter note F1, an eighth note E1, a quarter note D1, and an eighth note C1. The fourth measure contains a quarter note B1, an eighth note A1, a quarter note G1, and an eighth note F1. The piece ends with a double bar line.

Trombone
Octatonic Scales
2 Octaves

Posaune
Oktatonischen Tonleitern
2 Oktaven

Trombone
Gammes Octatoniques
2 Octaves

A \flat Octatonic (Half-Whole)



A \flat Octatonic (Whole-Half)



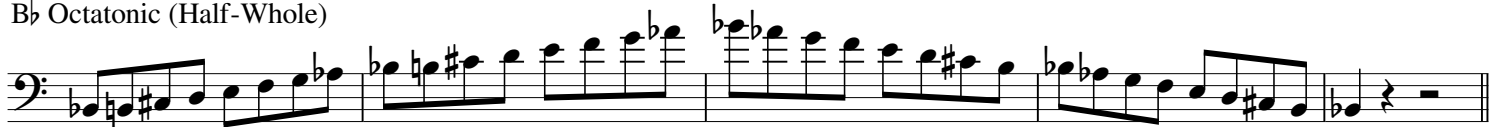
A Octatonic (Half-Whole)



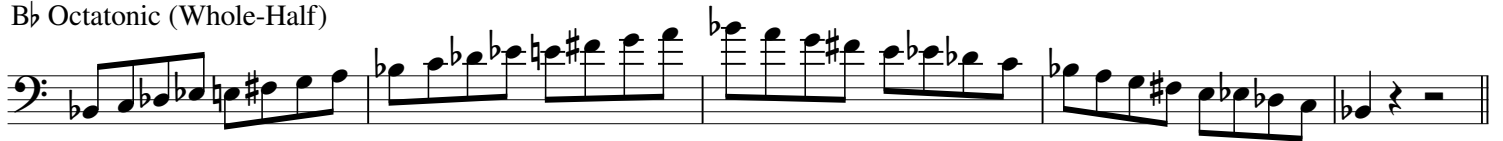
A Octatonic (Whole-Half)



B \flat Octatonic (Half-Whole)



B \flat Octatonic (Whole-Half)



B Octatonic (Half-Whole)



B Octatonic (Whole-Half)

