

Double Bass  
Major Scales  
1 Octave

Kontrabass  
Dur-Tonleitern  
1 Oktave

Contrebasse  
Gammes Majeures  
1 Octave

C Major



F Major



Bb Major



Eb Major



Ab Major



Db Major



Gb Major



B Major



E Major



A Major



D Major



G Major



Contrebasse  
Troisièmes  
1 Octave

Major



The image shows the Major scale in bass clef, spanning two octaves. The notes are C2, D2, E2, F2, G2, A2, B2, C3, D3, E3, F3, G3, A3, B3, C4. The scale is written on a single staff with a bass clef. The notes are connected by a continuous line, indicating a scale. The final note, C4, is a whole note, while the others are half notes.

Musical notation for the bass line of 'The Rose Tree'. The key signature is one flat (B-flat), and the time signature is 4/4. The melody consists of eighth and quarter notes, with some beamed eighth notes. The notation is as follows:   
 Measure 1: B2, C3, D3, E3 (quarter notes), F3, G3, A3, B3 (beamed eighth notes), C4, D4, E4, F4 (quarter notes).   
 Measure 2: G4, A4, B4, C5 (quarter notes), D5, E5, F5, G5 (beamed eighth notes), A5, B5, C6, D6 (quarter notes).   
 Measure 3: E6, F6, G6, A6 (quarter notes), B6, C7, D7, E7 (beamed eighth notes), F7, G7, A7, B7 (quarter notes).   
 Measure 4: C8, D8, E8, F8 (quarter notes), G8, A8, B8, C9 (beamed eighth notes), D9, E9, F9, G9 (quarter notes).   
 Measure 5: A9, B9, C10, D10 (quarter notes), E10, F10, G10, A10 (beamed eighth notes), B10, C11, D11, E11 (quarter notes).   
 Measure 6: F11, G11, A11, B11 (quarter notes), C12, D12, E12, F12 (beamed eighth notes), G12, A12, B12, C13 (quarter notes).   
 Measure 7: D13, E13, F13, G13 (quarter notes), A13, B13, C14, D14 (beamed eighth notes), E14, F14, G14, A14 (quarter notes).   
 Measure 8: B14, C15, D15, E15 (quarter notes), F15, G15, A15, B15 (beamed eighth notes), C16, D16, E16, F16 (quarter notes).   
 Measure 9: G16, A16, B16, C17 (quarter notes), D17, E17, F17, G17 (beamed eighth notes), A17, B17, C18, D18 (quarter notes).   
 Measure 10: E18, F18, G18, A18 (quarter notes), B18, C19, D19, E19 (beamed eighth notes), F19, G19, A19, B19 (quarter notes).   
 Measure 11: C20, D20, E20, F20 (quarter notes), G20, A20, B20, C21 (beamed eighth notes), D21, E21, F21, G21 (quarter notes).   
 Measure 12: A21, B21, C22, D22 (quarter notes), E22, F22, G22, A22 (beamed eighth notes), B22, C23, D23, E23 (quarter notes).   
 Measure 13: F23, G23, A23, B23 (quarter notes), C24, D24, E24, F24 (beamed eighth notes), G24, A24, B24, C25 (quarter notes).   
 Measure 14: D25, E25, F25, G25 (quarter notes), A25, B25, C26, D26 (beamed eighth notes), E26, F26, G26, A26 (quarter notes).   
 Measure 15: B26, C27, D27, E27 (quarter notes), F27, G27, A27, B27 (beamed eighth notes), C28, D28, E28, F28 (quarter notes).   
 Measure 16: G28, A28, B28, C29 (quarter notes), D29, E29, F29, G29 (beamed eighth notes), A29, B29, C30, D30 (quarter notes).   
 Measure 17: E30, F30, G30, A30 (quarter notes), B30, C31, D31, E31 (beamed eighth notes), F31, G31, A31, B31 (quarter notes).   
 Measure 18: C31, D31, E31, F31 (quarter notes), G31, A31, B31, C32 (beamed eighth notes), D32, E32, F32, G32 (quarter notes).   
 Measure 19: A32, B32, C33, D33 (quarter notes), E33, F33, G33, A33 (beamed eighth notes), B33, C34, D34, E34 (quarter notes).   
 Measure 20: F34, G34, A34, B34 (quarter notes), C35, D35, E35, F35 (beamed eighth notes), G35, A35, B35, C36 (quarter notes).   
 Measure 21: D36, E36, F36, G36 (quarter notes), A36, B36, C37, D37 (beamed eighth notes), E37, F37, G37, A37 (quarter notes).   
 Measure 22: B37, C38, D38, E38 (quarter notes), F38, G38, A38, B38 (beamed eighth notes), C39, D39, E39, F39 (quarter notes).   
 Measure 23: G39, A39, B39, C40 (quarter notes), D40, E40, F40, G40 (beamed eighth notes), A40, B40, C41, D41 (quarter notes).   
 Measure 24: E41, F41, G41, A41 (quarter notes), B41, C42, D42, E42 (beamed eighth notes), F42, G42, A42, B42 (quarter notes).   
 Measure 25: C42, D42, E42, F42 (quarter notes), G42, A42, B42, C43 (beamed eighth notes), D43, E43, F43, G43 (quarter notes).   
 Measure 26: A43, B43, C44, D44 (quarter notes), E44, F44, G44, A44 (beamed eighth notes), B44, C45, D45, E45 (quarter notes).   
 Measure 27: F45, G45, A45, B45 (quarter notes), C46, D46, E46, F46 (beamed eighth notes), G46, A46, B46, C47 (quarter notes).   
 Measure 28: D47, E47, F47, G47 (quarter notes), A47, B47, C48, D48 (beamed eighth notes), E48, F48, G48, A48 (quarter notes).   
 Measure 29: B48, C49, D49, E49 (quarter notes), F49, G49, A49, B49 (beamed eighth notes), C50, D50, E50, F50 (quarter notes).   
 Measure 30: G50, A50, B50, C51 (quarter notes), D51, E51, F51, G51 (beamed eighth notes), A51, B51, C52, D52 (quarter notes).   
 Measure 31: E52, F52, G52, A52 (quarter notes), B52, C53, D53, E53 (beamed eighth notes), F53, G53, A53, B53 (quarter notes).   
 Measure 32: C53, D53, E53, F53 (quarter notes), G53, A53, B53, C54 (beamed eighth notes), D54, E54, F54, G54 (quarter notes).   
 Measure 33: A54, B54, C55, D55 (quarter notes), E55, F55, G55, A55 (beamed eighth notes), B55, C56, D56, E56 (quarter notes).   
 Measure 34: F56, G56, A56, B56 (quarter notes), C57, D57, E57, F57 (beamed eighth notes), G57, A57, B57, C58 (quarter notes).   
 Measure 35: D58, E58, F58, G58 (quarter notes), A58, B58, C59, D59 (beamed eighth notes), E59, F59, G59, A59 (quarter notes).   
 Measure 36: B59, C60, D60, E60 (quarter notes), F60, G60, A60, B60 (beamed eighth notes), C61, D61, E61, F61 (quarter notes).   
 Measure 37: G61, A61, B61, C62 (quarter notes), D62, E62, F62, G62 (beamed eighth notes), A62, B62, C63, D63 (quarter notes).   
 Measure 38: E63, F63, G63, A63 (quarter notes), B63, C64, D64, E64 (beamed eighth notes), F64, G64, A64, B64 (quarter notes).   
 Measure 39: C64, D64, E64, F64 (quarter notes), G64, A64, B64, C65 (beamed eighth notes), D65, E65, F65, G65 (quarter notes).   
 Measure 40: A65, B65, C66, D66 (quarter notes), E66, F66, G66, A66 (beamed eighth notes), B66, C67, D67, E67 (quarter notes).   
 Measure 41: F67, G67, A67, B67 (quarter notes), C68, D68, E68, F68 (beamed eighth notes), G68, A68, B68, C69 (quarter notes).   
 Measure 42: D69, E69, F69, G69 (quarter notes), A69, B69, C70, D70 (beamed eighth notes), E70, F70, G70, A70 (quarter notes).   
 Measure 43: B70, C71, D71, E71 (quarter notes), F71, G71, A71, B71 (beamed eighth notes), C72, D72, E72, F72 (quarter notes).   
 Measure 44: G72, A72, B72, C73 (quarter notes), D73, E73, F73, G73 (beamed eighth notes), A73, B73, C74, D74 (quarter notes).   
 Measure 45: E74, F74, G74, A74 (quarter notes), B74, C75, D75, E75 (beamed eighth notes), F75, G75, A75, B75 (quarter notes).   
 Measure 46: C75, D75, E75, F75 (quarter notes), G75, A75, B75, C76 (beamed eighth notes), D76, E76, F76, G76 (quarter notes).   
 Measure 47: A76, B76, C77, D77 (quarter notes), E77, F77, G77, A77 (beamed eighth notes), B77, C78, D78, E78 (quarter notes).   
 Measure 48: F78, G78, A78, B78 (quarter notes), C79, D79, E79, F79 (beamed eighth notes), G79, A79, B79, C80 (quarter notes).   
 Measure 49: D80, E80, F80, G80 (quarter notes), A80, B80, C81, D81 (beamed eighth notes), E81, F81, G81, A81 (quarter notes).   
 Measure 50: B81, C82, D82, E82 (quarter notes), F82, G82, A82, B82 (beamed eighth notes), C83, D83, E83, F83 (quarter notes).   
 Measure 51: G83, A83, B83, C84 (quarter notes), D84, E84, F84, G84 (beamed eighth notes), A84, B84, C85, D85 (quarter notes).   
 Measure 52: E85, F85, G85, A85 (quarter notes), B85, C86, D86, E86 (beamed eighth notes), F86, G86, A86, B86 (quarter notes).   
 Measure 53: C86, D86, E86, F86 (quarter notes), G86, A86, B86, C87 (beamed eighth notes), D87, E87, F87, G87 (quarter notes).   
 Measure 54: A87, B87, C88, D88 (quarter notes), E88, F88, G88, A88 (beamed eighth notes), B88, C89, D89, E89 (quarter notes).   
 Measure 55: F89, G89, A89, B89 (quarter notes), C90, D90, E90, F90 (beamed eighth notes), G90, A90, B90, C91 (quarter notes).   
 Measure 56: D91, E91, F91, G91 (quarter notes), A91, B91, C92, D92 (beamed eighth notes), E92, F92, G92, A92 (quarter notes).   
 Measure 57: B92, C93, D93, E93 (quarter notes), F93, G93, A93, B93 (beamed eighth notes), C94, D94, E94, F94 (quarter notes).   
 Measure 58: G94, A94, B94, C95 (quarter notes), D95, E95, F95, G95 (beamed eighth notes), A95, B95, C96, D96 (quarter notes).   
 Measure 59: E96, F96, G96, A96 (quarter notes), B96, C97, D97, E97 (beamed eighth notes), F97, G97, A97, B97 (quarter notes).   
 Measure 6

♭ Major

[illegible]

A Major

[illegible]

G Major



The musical notation shows the G Major scale in bass clef, spanning 8 measures. The key signature has one sharp (F#). The notes are: G2, A2, B2, C3, D3, E3, F#3, G3 (measures 1-2); A3, B3, C4, D4, E4, F#4, G4 (measures 3-4); A4, B4, C5, D5, E5, F#5, G5 (measures 5-6); and F#5, E5, D5, C5, B4, A4, G4 (measures 7-8). The notation includes slurs for the ascending and descending scales.

Double Bass  
Fourths  
1 Octave

Kontrabass  
Viertel  
1 Oktave

Contrebasse  
Quatrièmes  
1 Octave

C Major



F Major



Bb Major



Eb Major



Ab Major



Db Major



Gb Major



B Major



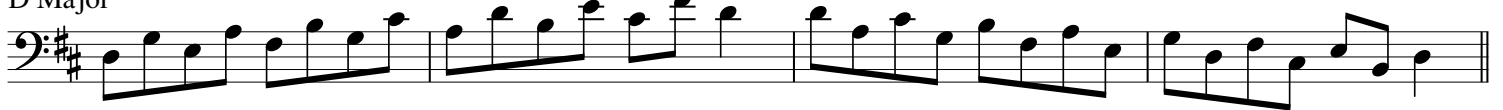
E Major



A Major



D Major



G Major

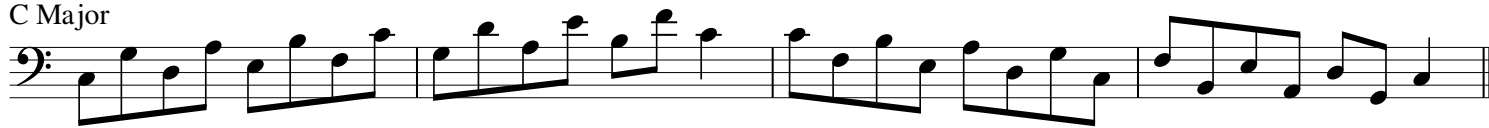


Double Bass  
Fifths  
1 Octave

Kontrabass  
Fünftel  
1 Oktave

Contrebasse  
Cinquièmes  
1 Octave

C Major



F Major



Bb Major



Eb Major



Ab Major



Db Major



Double Bass  
Fifths  
1 Octave

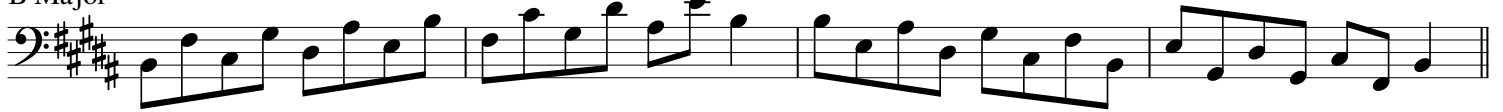
Kontrabass  
Fünftel  
1 Oktave

Contrebasse  
Cinquièmes  
1 Octave

G $\flat$  Major



B Major



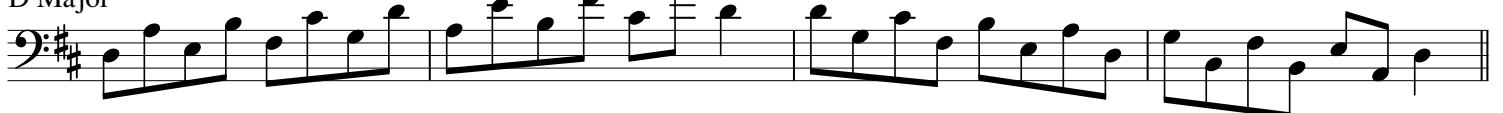
E Major



A Major



D Major



G Major

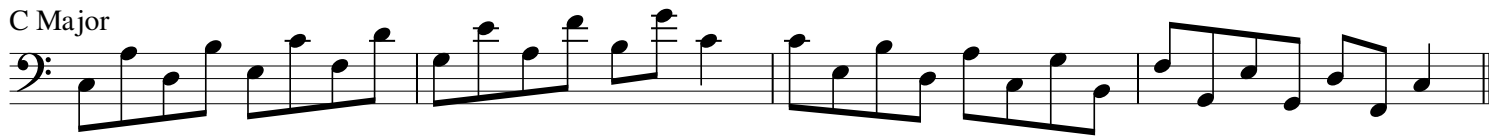


Double Bass  
Sixths  
1 Octave

Kontrabass  
Sechstel  
1 Oktave

Contrebasse  
Sixièmes  
1 Octave

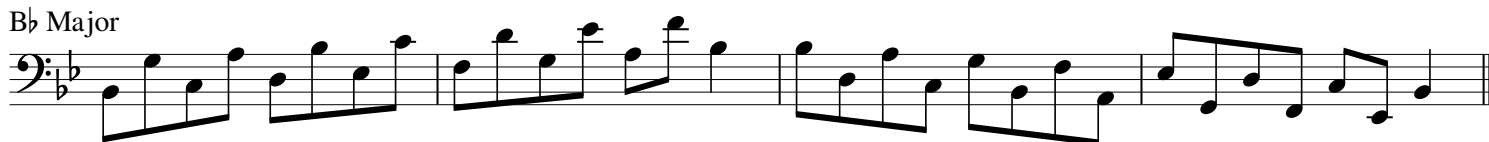
C Major



F Major



Bb Major



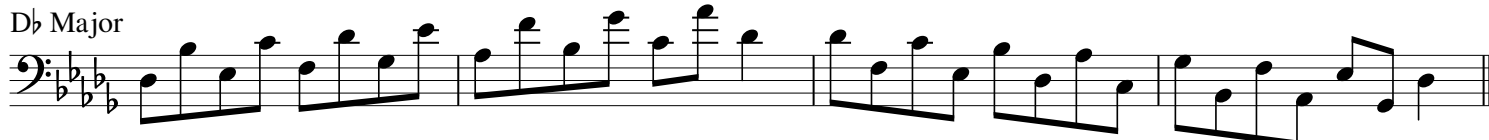
Eb Major



Ab Major



Db Major



Double Bass  
Sixths  
1 Octave

Kontrabass  
Sechstel  
1 Oktave

Contrebasse  
Sixièmes  
1 Octave

G $\flat$  Major



B Major



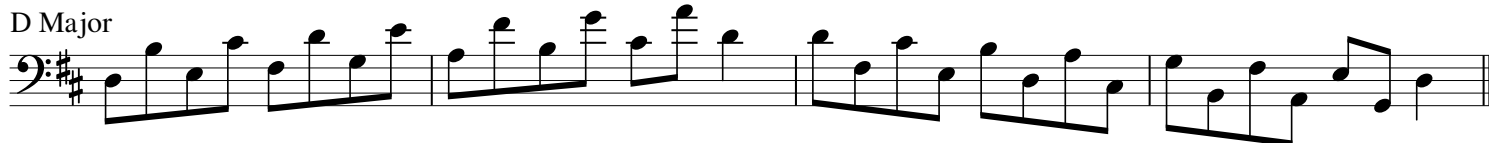
E Major



A Major



D Major



G Major



Double Bass  
Sevenths  
1 Octave

Kontrabass  
Septimen  
1 Oktave

Contrebasse  
Septièmes  
1 Octave

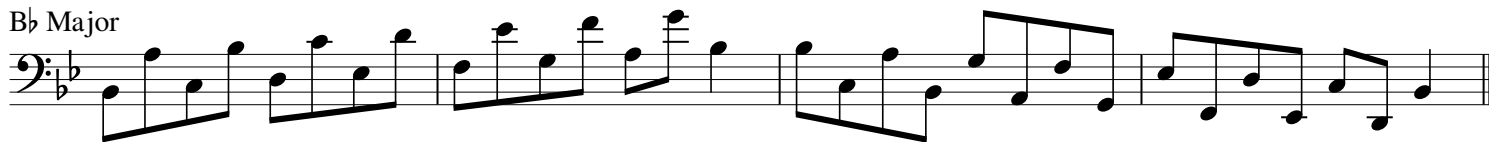
C Major



F Major



Bb Major



Eb Major



Ab Major



Db Major





Double Bass  
Sevenths  
1 Octave

Kontrabass  
Septimen  
1 Oktave

Contrebasse  
Septièmes  
1 Octave

G $\flat$  Major



B Major



E Major



A Major



D Major



G Major



Double Bass  
Major Scales  
2 Octaves

Kontrabass  
Dur-Tonleitern  
2 Oktaven

Contrebasse  
Gammes Majeures  
2 Octaves

C Major



F Major



Bb Major



Eb Major



Ab Major



Db Major



Gb Major



B Major



E Major



A Major



D Major



G Major



Double Bass  
Thirds  
2 Octaves

Kontrabass  
Drittel  
2 Oktaven

Contrebasse  
Troisièmes  
2 Octaves

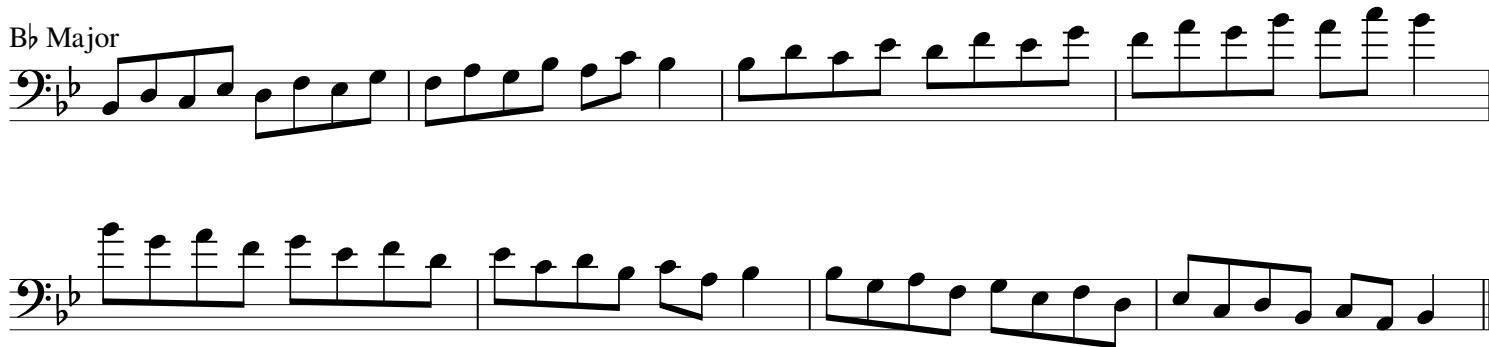
C Major



F Major



B♭ Major



E♭ Major



Double Bass  
Thirds  
2 Octaves

Kontrabass  
Drittel  
2 Oktaven

Contrebasse  
Troisièmes  
2 Octaves

A♭ Major



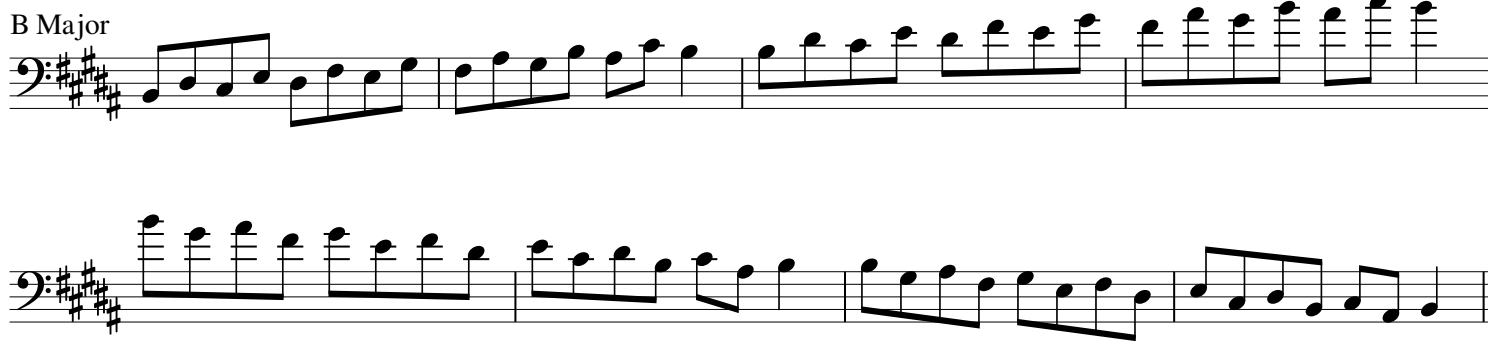
D♭ Major



G♭ Major



B Major



Double Bass  
Thirds  
2 Octaves

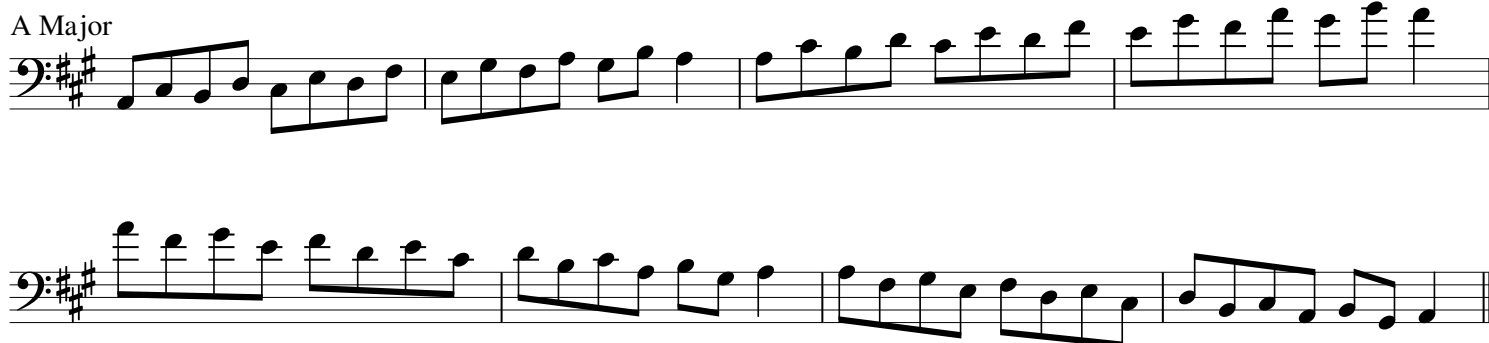
Kontrabass  
Drittel  
2 Oktaven

Contrebasse  
Troisièmes  
2 Octaves

E Major



A Major



D Major



G Major

