

Double Bass  
Modal Scales  
1 Octave

Kontrabass  
Modalen Tonleitern  
1 Oktave

Contrebasse  
Gammes Modales  
1 Octave

C Ionian



D Dorian



E Phrygian



F Lydian



G Mixolydian



A Aeolian



B Locrian



Double Bass  
Modal Scales  
1 Octave

Kontrabass  
Modalen Tonleitern  
1 Oktave

Contrebasse  
Gammes Modales  
1 Octave

F Ionian



G Dorian



A Phrygian



B $\flat$  Lydian



C Mixolydian



D Aeolian



E Locrian



Double Bass  
Modal Scales  
1 Octave

Kontrabass  
Modalen Tonleitern  
1 Oktave

Contrebasse  
Gammes Modales  
1 Octave

B $\flat$  Ionian



C Dorian



D Phrygian



E $\flat$  Lydian



F Mixolydian



G Aeolian



A Locrian



Double Bass  
Modal Scales  
1 Octave

Kontrabass  
Modalen Tonleitern  
1 Oktave

Contrebasse  
Gammes Modales  
1 Octave

E♭ Ionian



F Dorian



G Phrygian



A♭ Lydian



B♭ Mixolydian



C Aeolian



D Locrian



Double Bass  
Modal Scales  
1 Octave

Kontrabass  
Modalen Tonleitern  
1 Oktave

Contrebasse  
Gammes Modales  
1 Octave

A $\flat$  Ionian



B $\flat$  Dorian



C Phrygian



D $\flat$  Lydian



E $\flat$  Mixolydian



F Aeolian



G Locrian



Double Bass  
Modal Scales  
1 Octave

Kontrabass  
Modalen Tonleitern  
1 Oktave

Contrebasse  
Gammes Modales  
1 Octave

D $\flat$  Ionian



E $\flat$  Dorian



F Phrygian



G $\flat$  Lydian



A $\flat$  Mixolydian



B $\flat$  Aeolian



C Locrian

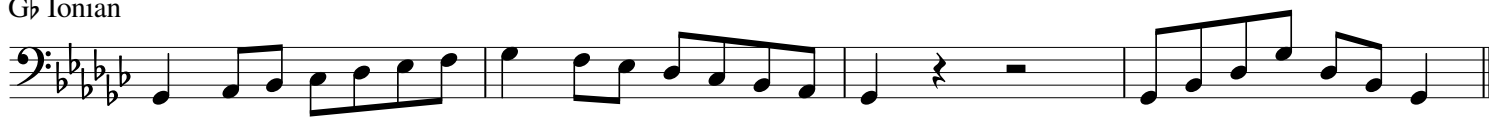


Double Bass  
Modal Scales  
1 Octave

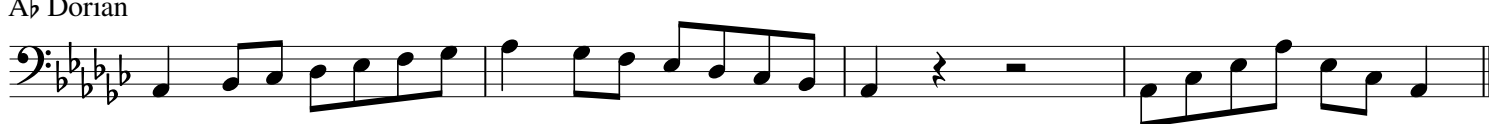
Kontrabass  
Modalen Tonleitern  
1 Oktave

Contrebasse  
Gammes Modales  
1 Octave

G $\flat$  Ionian



A $\flat$  Dorian



B $\flat$  Phrygian



C $\flat$  Lydian



D $\flat$  Mixolydian



E $\flat$  Aeolian



F Locrian



Double Bass  
Modal Scales  
1 Octave

Kontrabass  
Modalen Tonleitern  
1 Oktave

Contrebasse  
Gammes Modales  
1 Octave

B Ionian



C# Dorian



D# Phrygian



E Lydian



F# Mixolydian



G# Aeolian



A# Locrian





Kontrabass  
Modalen Tonleitern  
1 Oktave

## The musical notation for the bass staff shows a sequence of notes across four measures. The first measure contains six eighth notes ascending from G2 to D3. The second measure contains five eighth notes descending from C3 to G2. The third measure begins with a quarter rest followed by two eighth notes (F#2 and E2), then a quarter rest. The fourth measure contains six eighth notes ascending from G2 to D3. The key signature has three sharps (F#, C#, G#) and the time signature is 8/8.

[illegible]

The bass line of 'The Rose Tree' is written on a single staff in bass clef with a key signature of three sharps (F#, C#, G#). The melody consists of the following notes: G2 (quarter), A2-B2 (eighth pair), C3-D3 (eighth pair), E3 (quarter), D3-C3 (eighth pair), B2-A2 (eighth pair), G2 (quarter), followed by a whole rest. The final measure contains: G2-A2-B2 (eighth pair), C3-D3 (eighth pair), E3 (quarter), and G2 (quarter). The piece ends with a double bar line.

The bass line of 'The Rose Tree' is written in G major (one sharp) and 2/4 time. It consists of four measures. The first measure contains a half note G2. The second measure contains a half note A2. The third measure contains a half note B2. The fourth measure contains a half note C3. The melody is simple and follows the natural harmonic progression of the song.

[illegible]

Double Bass  
Modal Scales  
1 Octave

Kontrabass  
Modalen Tonleitern  
1 Oktave

Contrebasse  
Gammes Modales  
1 Octave

A Ionian



B Dorian



C# Phrygian



D Lydian



E Mixolydian



F# Aeolian



G# Locrian



Double Bass  
Modal Scales  
1 Octave

Kontrabass  
Modalen Tonleitern  
1 Oktave

Contrebasse  
Gammes Modales  
1 Octave

D Ionian



E Dorian



F# Phrygian



G Lydian



A Mixolydian



B Aeolian



C# Locrian



Double Bass  
Modal Scales  
1 Octave

Kontrabass  
Modalen Tonleitern  
1 Oktave

Contrebasse  
Gammes Modales  
1 Octave

G Ionian



A Dorian



B Phrygian



C Lydian



D Mixolydian



E Aeolian



F# Locrian



Double Bass  
Dorian Scales  
1 Octave

Kontrabass  
Dorischen Tonleitern  
1 Oktave

Contrebasse  
Gammes Doriennes  
1 Octave

D Dorian



G Dorian



C Dorian



F Dorian



Bb Dorian



Eb Dorian



Ab Dorian



C# Dorian



F# Dorian



B Dorian



E Dorian



A Dorian



# Double Bass Phrygian Scales 1 Octave

Kontrabass  
Phrygischen Tonleitern  
1 Oktave

Contrebasse  
Gammes Phrygiennes  
1 Octave

## E Phrygian



## A Phrygian



## D Phrygian



## G Phrygian



## C Phrygian



## F Phrygian



## B♭ Phrygian



### D# Phrygian



## G# Phrygian



## C# Phrygian



### F# Phrygian



## B Phrygian



Double Bass  
Lydian Scales  
1 Octave

Kontrabass  
Lydischen Tonleitern  
1 Oktave

Contrebasse  
Gammes Lydiennes  
1 Octave

F Lydian



Bb Lydian



Eb Lydian



Ab Lydian



Db Lydian



Gb Lydian



Cb Lydian



E Lydian



A Lydian



D Lydian



G Lydian



C Lydian



Double Bass  
Mixolydian Scales  
1 Octave

Kontrabass  
Mixolydischen Tonleitern  
1 Oktave

Contrebasse  
Gammes Mixolydiennes  
1 Octave

G Mixolydian



C Mixolydian



F Mixolydian



Bb Mixolydian



Eb Mixolydian



Ab Mixolydian



Db Mixolydian



F# Mixolydian



B Mixolydian



E Mixolydian



A Mixolydian



D Mixolydian





Double Bass  
Locrian Scales  
1 Octave

Kontrabass  
Lokrischen Tonleitern  
1 Oktave

Contrebasse  
Gammes Locriennes  
1 Octave

B Locrian



E Locrian



A Locrian



D Locrian



G Locrian



C Locrian



F Locrian



A# Locrian



D# Locrian



G# Locrian



C# Locrian



F# Locrian

