

Bass Clarinet  
Natural Minor Scales  
1 Octave

Bassklarinette  
Natürlichen Moll-Tonleitern  
1 Oktave

Clarinete Basse  
Gammes Mineures Naturelles  
1 Octave

A Minor



D Minor



G Minor



C Minor



F Minor



Bb Minor



Eb Minor



Ab Minor



C# Minor



F# Minor



B Minor



E Minor



Bass Clarinet  
Thirds  
1 Octave

Bassklarinette  
Drittel  
1 Oktave

Clarinete Basse  
Troisièmes  
1 Octave

A Minor



D Minor



G Minor



C Minor



F Minor



Bb Minor



Eb Minor



Ab Minor



C# Minor



F# Minor



B Minor



E Minor



Bass Clarinet  
Fourths  
1 Octave

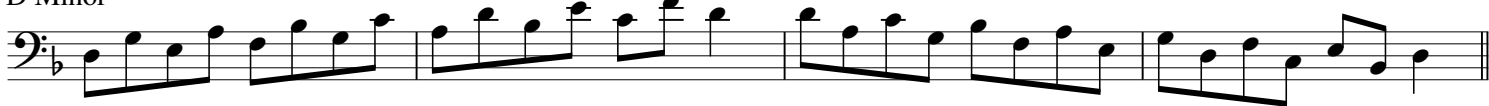
Bassklarinette  
Viertel  
1 Oktave

Clarinete Basse  
Quatrièmes  
1 Octave

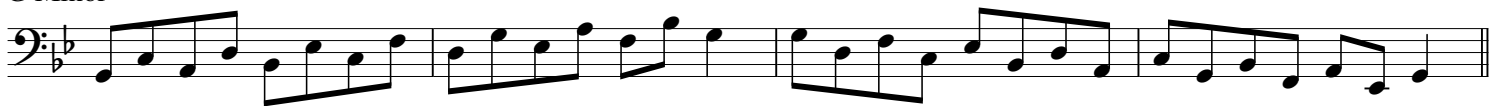
A Minor



D Minor



G Minor



C Minor



F Minor



B $\flat$  Minor



E $\flat$  Minor



A $\flat$  Minor



C# Minor



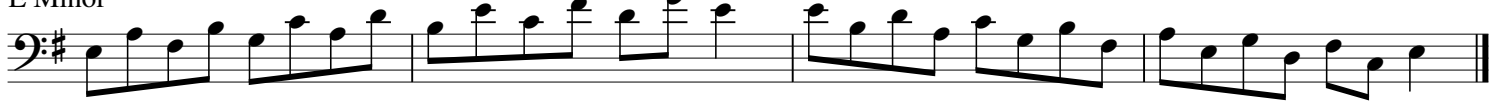
F# Minor



B Minor



E Minor



Bass Clarinet  
Fifths  
1 Octave

Bassklarinette  
Fünftel  
1 Oktave

Clarinete Basse  
Cinquièmes  
1 Octave

A Minor



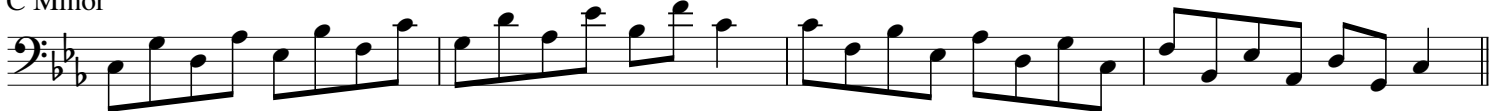
D Minor



G Minor



C Minor



F Minor



Bb Minor



Eb Minor



Ab Minor



C# Minor



F# Minor



B Minor



E Minor



Bass Clarinet  
Sixths  
1 Octave

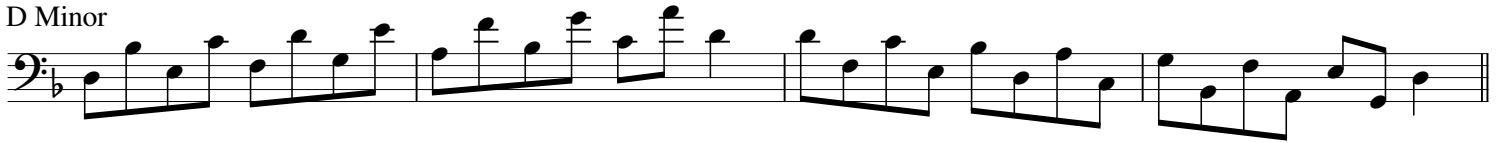
Bassklarinette  
Sechstel  
1 Oktave

Clarinete Basse  
Sixièmes  
1 Octave

A Minor



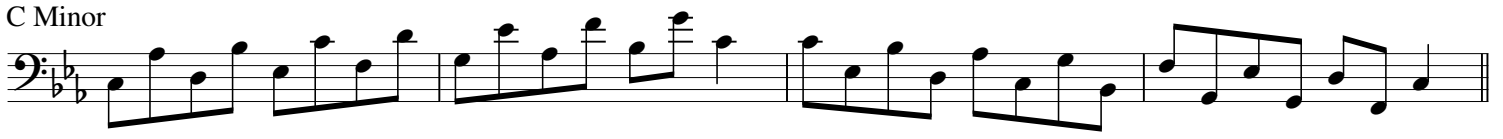
D Minor



G Minor



C Minor



F Minor



Bb Minor



Bass Clarinet  
Sixths  
1 Octave

Bassklarinette  
Sechstel  
1 Oktave

Clarinette Basse  
Sixièmes  
1 Octave

E♭ Minor



A♭ Minor



C# Minor



F# Minor



B Minor



E Minor




Bassklarinette  
Septimen  
1 Oktave

Clarinette Basse  
Septièmes  
1 Octave

A Minor



D Minor

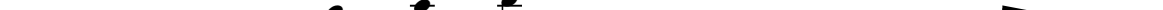


The image shows the D Minor scale written in bass clef on a single staff. The key signature has one flat (B-flat). The scale consists of the following notes: D2, E2, F2, G2, A2, Bb2, C3, D3, E3, F3, G3, A3, Bb3, C4, D4. The notes are connected by a continuous line, indicating a scale. The final note, D4, is followed by a double bar line.

G Minor



C Minor



A musical staff with a bass clef and a key signature of two flats (Bb and Eb). The scale is written in C minor, starting on C2 and ascending to C3. The notes are: C2, D2, Eb2, E2, F2, G2, Ab2, A2, Bb2, B2, C3. The staff is divided into measures by bar lines. The first measure contains C2, D2, and Eb2. The second measure contains E2, F2, and G2. The third measure contains Ab2, A2, and Bb2. The fourth measure contains B2, C3, and a double bar line.

F Minor



Bb Minor



The image shows the Bb Minor scale in bass clef, spanning four measures. The key signature has three flats (Bb, Eb, Ab). The scale is written in a single line of music, with notes beamed in groups of four. The notes are: Bb2, Bb3, Bb4, Bb5, Eb5, Eb4, Eb3, Eb2, Ab2, Ab3, Ab4, Ab5, Ab5, Ab4, Ab3, Ab2, Bb2. The scale is written in a single line of music, with notes beamed in groups of four. The notes are: Bb2, Bb3, Bb4, Bb5, Eb5, Eb4, Eb3, Eb2, Ab2, Ab3, Ab4, Ab5, Ab5, Ab4, Ab3, Ab2, Bb2.

Bass Clarinet  
Sevenths  
1 Octave

Bassklarinette  
Septimen  
1 Oktave

Clarinette Basse  
Septièmes  
1 Octave

E♭ Minor



A♭ Minor



C# Minor



F# Minor



B Minor



E Minor



Bass Clarinet  
Natural Minor Scales  
2 Octaves

Bassklarinette  
Natürlichen Moll-Tonleitern  
2 Oktaven

Clarinete Basse  
Gammes Mineures Naturelles  
2 Octaves

A Minor



D Minor



G Minor



C Minor



F Minor



Bb Minor



Eb Minor



Ab Minor



C# Minor



F# Minor



B Minor



E Minor



Bass Clarinet  
Thirds  
2 Octaves

Bassklarinette  
Drittel  
2 Oktaven

Clarinete Basse  
Troisièmes  
2 Octaves

A Minor



D Minor



G Minor



C Minor



Bass Clarinet  
Thirds  
2 Octaves

Bassklarinette  
Drittel  
2 Oktaven

Clarinete Basse  
Troisièmes  
2 Octaves

F Minor



B♭ Minor



E♭ Minor



A♭ Minor



Bass Clarinet  
Thirds  
2 Octaves

Bassklarinette  
Drittel  
2 Oktaven

Clarinete Basse  
Troisièmes  
2 Octaves

C# Minor



F# Minor



B Minor



E Minor

