

Euphonium  
Harmonic Minor Scales  
1 Octave

Euphonium  
Harmonischen Moll-Tonleitern  
1 Oktave

Eufono  
Escalas Menores Armónicas  
1 Octava

Menor Armónica de La



Menor Armónica de Re



Menor Armónica de Sol



Menor Armónica de Do



Menor Armónica de Fa



Menor Armónica de Sib



Menor Armónica de Mi



Menor Armónica de Lab



Menor Armónica de Do#



Menor Armónica de Fa#



Menor Armónica de Si



Menor Armónica de Mi



Eufono  
Terceras  
1 Octava

Musical notation for the bass line of 'The Rose Tree'. The key signature has one sharp (F#), and the time signature is 3/4. The melody consists of the following notes: G2, A2, B2, C3, D3, E3, F#3, G3, A3, B3, C4, D4, E4, F#4, G4, A4, B4, C5, D5, E5, F#5, G5, A5, B5, C6, D6, E6, F#6, G6, A6, B6, C7, D7, E7, F#7, G7, A7, B7, C8, D8, E8, F#8, G8, A8, B8, C9, D9, E9, F#9, G9, A9, B9, C10, D10, E10, F#10, G10, A10, B10, C11, D11, E11, F#11, G11, A11, B11, C12, D12, E12, F#12, G12, A12, B12, C13, D13, E13, F#13, G13, A13, B13, C14, D14, E14, F#14, G14, A14, B14, C15, D15, E15, F#15, G15, A15, B15, C16, D16, E16, F#16, G16, A16, B16, C17, D17, E17, F#17, G17, A17, B17, C18, D18, E18, F#18, G18, A18, B18, C19, D19, E19, F#19, G19, A19, B19, C20, D20, E20, F#20, G20, A20, B20, C21, D21, E21, F#21, G21, A21, B21, C22, D22, E22, F#22, G22, A22, B22, C23, D23, E23, F#23, G23, A23, B23, C24, D24, E24, F#24, G24, A24, B24, C25, D25, E25, F#25, G25, A25, B25, C26, D26, E26, F#26, G26, A26, B26, C27, D27, E27, F#27, G27, A27, B27, C28, D28, E28, F#28, G28, A28, B28, C29, D29, E29, F#29, G29, A29, B29, C30, D30, E30, F#30, G30, A30, B30, C31, D31, E31, F#31, G31, A31, B31, C32, D32, E32, F#32, G32, A32, B32, C33, D33, E33, F#33, G33, A33, B33, C34, D34, E34, F#34, G34, A34, B34, C35, D35, E35, F#35, G35, A35, B35, C36, D36, E36, F#36, G36, A36, B36, C37, D37, E37, F#37, G37, A37, B37, C38, D38, E38, F#38, G38, A38, B38, C39, D39, E39, F#39, G39, A39, B39, C40, D40, E40, F#40, G40, A40, B40, C41, D41, E41, F#41, G41, A41, B41, C42, D42, E42, F#42, G42, A42, B42, C43, D43, E43, F#43, G43, A43, B43, C44, D44, E44, F#44, G44, A44, B44, C45, D45, E45, F#45, G45, A45, B45, C46, D46, E46, F#46, G46, A46, B46, C47, D47, E47, F#47, G47, A47, B47, C48, D48, E48, F#48, G48, A48, B48, C49, D49, E49, F#49, G49, A49, B49, C50, D50, E50, F#50, G50, A50, B50, C51, D51, E51, F#51, G51, A51, B51, C52, D52, E52, F#52, G52, A52, B52, C53, D53, E53, F#53, G53, A53, B53, C54, D54, E54, F#54, G54, A54, B54, C55, D55, E55, F#55, G55, A55, B55, C56, D56, E56, F#56, G56, A56, B56, C57, D57, E57, F#57, G57, A57, B57, C58, D58, E58, F#58, G58, A58, B58, C59, D59, E59, F#59, G59, A59, B59, C60, D60, E60, F#60, G60, A60, B60, C61, D61, E61, F#61, G61, A61, B61, C62, D62, E62, F#62, G62, A62, B62, C63, D63, E63, F#63, G63, A63, B63, C64, D64, E64, F#64, G64, A64, B64, C65, D65, E65, F#65, G65, A65, B65, C66, D66, E66, F#66, G66, A66, B66, C67, D67, E67, F#67, G67, A67, B67, C68, D68, E68, F#68, G68, A68, B68, C69, D69, E69, F#69, G69, A69, B69, C70, D70, E70, F#70, G70, A70, B70, C71, D71, E71, F#71, G71, A71, B71, C72, D72, E72, F#72, G72, A72, B72, C73, D73, E73, F#73, G73, A73, B73, C74, D74, E74, F#74, G74, A74, B74, C75, D75, E75, F#75, G75, A75, B75, C76, D76, E76, F#76, G76, A76, B76, C77, D77, E77, F#77, G77, A77, B77, C78, D78, E78, F#78, G78, A78, B78, C79, D79, E79, F#79, G79, A79, B79, C80, D80, E80, F#80, G80, A80, B80, C81, D81, E81, F#81, G81, A81, B81, C82, D82, E82, F#82, G82, A82, B82, C83, D83, E83, F#83, G83, A83, B83, C84, D84, E84, F#84, G84, A84, B84, C85, D85, E85, F#85, G85, A85, B85, C86, D86, E86, F#86, G86, A86, B86, C87, D87, E87, F#87, G87, A87, B87, C88, D88, E88, F#88, G88, A88, B88, C89, D89, E89, F#89, G89, A89, B89, C90, D90, E90, F#90, G90, A90, B90, C91, D91, E91, F#91, G91, A91, B91, C92, D92, E92, F#92, G92, A92, B92, C93, D93, E93, F#93, G93, A93, B93, C94, D94, E94, F#94, G94, A94, B94, C95, D95, E95, F#95, G95, A95, B95, C96, D96, E96, F#96, G96, A96, B96, C97, D97, E97, F#97, G97, A97, B97, C98, D98, E98, F#98, G98, A98, B98, C99, D99, E99, F#99, G99, A99, B99, C100, D100, E100, F#100, G100, A100, B100, C101, D101, E101, F#101, G101, A101, B101, C102, D102, E102, F#102, G102, A102, B102, C103, D103, E103, F#103, G103, A103, B103, C104, D104, E104, F#104, G104, A104, B104, C105, D105, E105, F#105, G105, A105, B105, C106, D106, E106, F#106, G106, A106, B106, C107, D107, E107, F#107, G107, A107, B107, C108, D108, E108, F#108, G108, A108, B108, C109, D109, E109, F#109, G109, A109, B109, C110, D110, E110, F#110, G110, A110, B110, C111, D111, E111, F#111, G111, A111, B111, C112, D112, E112, F#112, G112, A112, B112, C113, D113, E113, F#113, G113, A113, B113, C114, D114, E114, F#114, G114, A114, B114, C115, D115, E115, F#115, G115, A115, B115, C116, D116, E116, F#116, G116, A116, B116, C117, D117, E117, F#117, G117, A117, B117, C118, D118, E118, F#118, G118, A118, B118, C119, D119, E119, F#119, G119, A119, B119, C120, D120, E120, F#120, G120, A120, B120, C121, D121, E121, F#121, G121, A121, B121, C122, D122, E122, F#122, G122, A122, B122, C123, D123, E123, F#123, G123, A123, B123, C124, D124, E124, F#124, G124, A124, B124, C125, D125, E125, F#125, G125, A125, B125, C126, D126, E126, F#126, G126, A126, B126, C127, D127, E127, F#127, G127, A127, B127, C128, D128, E128, F#128, G128, A128, B128, C129, D129, E129, F#129, G129, A129, B129, C130, D130, E130, F#130, G130, A130, B130, C131, D131, E131, F#131, G131, A131, B131, C132, D132, E132, F#132, G132, A132, B132, C133, D133, E133, F#133, G133, A133, B133, C134, D134, E134, F#134, G134, A134, B134, C

Euphonium  
Fourths  
1 Octave

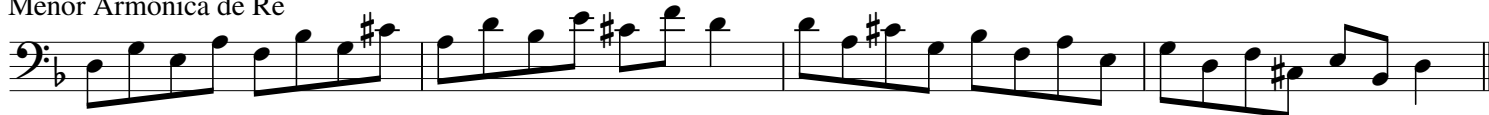
Euphonium  
Viertel  
1 Oktave

Eufono  
Cuartas  
1 Octava

Menor Armónica de La



Menor Armónica de Re



Menor Armónica de Sol



Menor Armónica de Do



Menor Armónica de Fa



Menor Armónica de Sib



Eufono  
Cuartas  
1 Octava

Menor Armónica de Mi7



Menor Armonica de La $\flat$

The musical notation for the Menor Armonica de La $\flat$  is written on a single staff. It begins with a bass clef and a key signature of two flats (B $\flat$  and E $\flat$ ). The melody consists of a series of eighth and sixteenth notes, starting on G $\flat$  and moving through various intervals, including a tritone (F $\sharp$ ), before ending on a whole note G $\flat$ .

The bass line of 'The Rose Tree' is written in 2/4 time on a single staff. It begins with a treble clef and a key signature of one sharp (F#). The melody consists of the following notes: G4 (quarter), A4 (quarter), B4 (quarter), C5 (quarter), B4 (quarter), A4 (quarter), G4 (quarter), F#4 (quarter), E4 (quarter), D4 (half). The piece concludes with a double bar line.

Menor Armonica de Fa#

The musical notation for the Menor Armonica de Fa# is written on a single staff in bass clef. The key signature has two sharps (F# and C#). The melody consists of the following notes: F#2, G#2, A2, B2, C#3, D3, E3, F#3, G#3, A3, B3, C#4, D4, E4, F#4, G#4, A4, B4, C#5, D5, E5, F#5, G#5, A5, B5, C#6, D6, E6, F#6, G#6, A6, B6, C#7, D7, E7, F#7, G#7, A7, B7, C#8, D8, E8, F#8, G#8, A8, B8, C#9, D9, E9, F#9, G#9, A9, B9, C#10, D10, E10, F#10, G#10, A10, B10, C#11, D11, E11, F#11, G#11, A11, B11, C#12, D12, E12, F#12, G#12, A12, B12, C#13, D13, E13, F#13, G#13, A13, B13, C#14, D14, E14, F#14, G#14, A14, B14, C#15, D15, E15, F#15, G#15, A15, B15, C#16, D16, E16, F#16, G#16, A16, B16, C#17, D17, E17, F#17, G#17, A17, B17, C#18, D18, E18, F#18, G#18, A18, B18, C#19, D19, E19, F#19, G#19, A19, B19, C#20, D20, E20, F#20, G#20, A20, B20, C#21, D21, E21, F#21, G#21, A21, B21, C#22, D22, E22, F#22, G#22, A22, B22, C#23, D23, E23, F#23, G#23, A23, B23, C#24, D24, E24, F#24, G#24, A24, B24, C#25, D25, E25, F#25, G#25, A25, B25, C#26, D26, E26, F#26, G#26, A26, B26, C#27, D27, E27, F#27, G#27, A27, B27, C#28, D28, E28, F#28, G#28, A28, B28, C#29, D29, E29, F#29, G#29, A29, B29, C#30, D30, E30, F#30, G#30, A30, B30, C#31, D31, E31, F#31, G#31, A31, B31, C#32, D32, E32, F#32, G#32, A32, B32, C#33, D33, E33, F#33, G#33, A33, B33, C#34, D34, E34, F#34, G#34, A34, B34, C#35, D35, E35, F#35, G#35, A35, B35, C#36, D36, E36, F#36, G#36, A36, B36, C#37, D37, E37, F#37, G#37, A37, B37, C#38, D38, E38, F#38, G#38, A38, B38, C#39, D39, E39, F#39, G#39, A39, B39, C#40, D40, E40, F#40, G#40, A40, B40, C#41, D41, E41, F#41, G#41, A41, B41, C#42, D42, E42, F#42, G#42, A42, B42, C#43, D43, E43, F#43, G#43, A43, B43, C#44, D44, E44, F#44, G#44, A44, B44, C#45, D45, E45, F#45, G#45, A45, B45, C#46, D46, E46, F#46, G#46, A46, B46, C#47, D47, E47, F#47, G#47, A47, B47, C#48, D48, E48, F#48, G#48, A48, B48, C#49, D49, E49, F#49, G#49, A49, B49, C#50, D50, E50, F#50, G#50, A50, B50, C#51, D51, E51, F#51, G#51, A51, B51, C#52, D52, E52, F#52, G#52, A52, B52, C#53, D53, E53, F#53, G#53, A53, B53, C#54, D54, E54, F#54, G#54, A54, B54, C#55, D55, E55, F#55, G#55, A55, B55, C#56, D56, E56, F#56, G#56, A56, B56, C#57, D57, E57, F#57, G#57, A57, B57, C#58, D58, E58, F#58, G#58, A58, B58, C#59, D59, E59, F#59, G#59, A59, B59, C#60, D60, E60, F#60, G#60, A60, B60, C#61, D61, E61, F#61, G#61, A61, B61, C#62, D62, E62, F#62, G#62, A62, B62, C#63, D63, E63, F#63, G#63, A63, B63, C#64, D64, E64, F#64, G#64, A64, B64, C#65, D65, E65, F#65, G#65, A65, B65, C#66, D66, E66, F#66, G#66, A66, B66, C#67, D67, E67, F#67, G#67, A67, B67, C#68, D68, E68, F#68, G#68, A68, B68, C#69, D69, E69, F#69, G#69, A69, B69, C#70, D70, E70, F#70, G#70, A70, B70, C#71, D71, E71, F#71, G#71, A71, B71, C#72, D72, E72, F#72, G#72, A72, B72, C#73, D73, E73, F#73, G#73, A73, B73, C#74, D74, E74, F#74, G#74, A74, B74, C#75, D75, E75, F#75, G#75, A75, B75, C#76, D76, E76, F#76, G#76, A76, B76, C#77, D77, E77, F#77, G#77, A77, B77, C#78, D78, E78, F#78, G#78, A78, B78, C#79, D79, E79, F#79, G#79, A79, B79, C#80, D80, E80, F#80, G#80, A80, B80, C#81, D81, E81, F#81, G#81, A81, B81, C#82, D82, E82, F#82, G#82, A82, B82, C#83, D83, E83, F#83, G#83, A83, B83, C#84, D84, E84, F#84, G#84, A84, B84, C#85, D85, E85, F#85, G#85, A85, B85, C#86, D86, E86, F#86, G#86, A86, B86, C#87, D87, E87, F#87, G#87, A87, B87, C#88, D88, E88, F#88, G#88, A88, B88, C#89, D89, E89, F#89, G#89, A89, B89, C#90, D90, E90, F#90, G#90, A90, B90, C#91, D91, E91, F#91, G#91, A91, B91, C#92, D92, E92, F#92, G#92, A92, B92, C#93, D93, E93, F#93, G#93, A93, B93, C#94, D94, E94, F#94, G#94, A94, B94, C#95, D95, E95, F#95, G#95, A95, B95, C#96, D96, E96, F#96, G#96, A96, B96, C#97, D97, E97, F#97, G#97, A97, B97, C#98, D98, E98, F#98, G#98, A98, B98, C#99, D99, E99, F#99, G#99, A99, B99, C#100, D100, E100, F#100, G#100, A100, B100, C#101, D101, E101, F#101, G#101, A101, B101, C#102, D102, E102, F#102, G#102, A102, B102, C#103, D103, E103, F#103, G#103, A103, B103, C#104, D104, E104, F#104, G#104, A104, B104, C#105, D105, E105, F#105, G#105, A105, B105, C#106, D106, E106, F#106, G#106, A106, B106, C#107, D107, E107, F#107, G#107, A107, B107, C#108, D108, E108, F#108, G#108, A108, B108, C#109, D109, E109, F#109, G#109, A109, B109, C#110, D110, E110, F#110, G#110, A110, B110, C#111, D111, E111, F#111, G#111, A111, B111, C#112, D112, E112, F#112, G#112, A112, B112, C#113, D113, E113, F#113, G#113, A113, B113, C#114, D114, E114, F#114, G#114, A114, B114, C#115, D115, E115, F#115, G#115, A115, B115, C#116, D116, E116, F#116, G#116, A116, B116, C#117, D117, E117, F#117, G#117, A117, B117, C#118, D118, E118, F#118, G#118, A118, B118, C#119, D119, E119, F#119, G#119, A119, B119, C#120, D120, E120, F#120, G#120, A120, B120, C#121, D121, E121, F#121, G#121, A121, B121, C#122, D122, E122, F#122, G#122, A122, B122, C#123, D123, E123, F#123, G#123, A123, B123, C#124, D124, E124, F#124, G#124, A124, B124, C#125, D125, E125, F#125, G#125, A125, B125, C#126, D126, E126, F#126, G#126, A126, B126, C#127, D127, E127, F#12

The bass line of 'The Rose Tree' is written on a single staff in bass clef with a key signature of one sharp (F#). The melody consists of the following notes: G2, A2, B2, C3, D3, E3, F#3, G3, A3, B3, C4, D4, E4, F#4, G4, A4, B4, C5, D5, E5, F#5, G5, A5, B5, C6, D6, E6, F#6, G6, A6, B6, C7, D7, E7, F#7, G7, A7, B7, C8, D8, E8, F#8, G8, A8, B8, C9, D9, E9, F#9, G9, A9, B9, C10, D10, E10, F#10, G10, A10, B10, C11, D11, E11, F#11, G11, A11, B11, C12, D12, E12, F#12, G12, A12, B12, C13, D13, E13, F#13, G13, A13, B13, C14, D14, E14, F#14, G14, A14, B14, C15, D15, E15, F#15, G15, A15, B15, C16, D16, E16, F#16, G16, A16, B16, C17, D17, E17, F#17, G17, A17, B17, C18, D18, E18, F#18, G18, A18, B18, C19, D19, E19, F#19, G19, A19, B19, C20, D20, E20, F#20, G20, A20, B20, C21, D21, E21, F#21, G21, A21, B21, C22, D22, E22, F#22, G22, A22, B22, C23, D23, E23, F#23, G23, A23, B23, C24, D24, E24, F#24, G24, A24, B24, C25, D25, E25, F#25, G25, A25, B25, C26, D26, E26, F#26, G26, A26, B26, C27, D27, E27, F#27, G27, A27, B27, C28, D28, E28, F#28, G28, A28, B28, C29, D29, E29, F#29, G29, A29, B29, C30, D30, E30, F#30, G30, A30, B30, C31, D31, E31, F#31, G31, A31, B31, C32, D32, E32, F#32, G32, A32, B32, C33, D33, E33, F#33, G33, A33, B33, C34, D34, E34, F#34, G34, A34, B34, C35, D35, E35, F#35, G35, A35, B35, C36, D36, E36, F#36, G36, A36, B36, C37, D37, E37, F#37, G37, A37, B37, C38, D38, E38, F#38, G38, A38, B38, C39, D39, E39, F#39, G39, A39, B39, C40, D40, E40, F#40, G40, A40, B40, C41, D41, E41, F#41, G41, A41, B41, C42, D42, E42, F#42, G42, A42, B42, C43, D43, E43, F#43, G43, A43, B43, C44, D44, E44, F#44, G44, A44, B44, C45, D45, E45, F#45, G45, A45, B45, C46, D46, E46, F#46, G46, A46, B46, C47, D47, E47, F#47, G47, A47, B47, C48, D48, E48, F#48, G48, A48, B48, C49, D49, E49, F#49, G49, A49, B49, C50, D50, E50, F#50, G50, A50, B50, C51, D51, E51, F#51, G51, A51, B51, C52, D52, E52, F#52, G52, A52, B52, C53, D53, E53, F#53, G53, A53, B53, C54, D54, E54, F#54, G54, A54, B54, C55, D55, E55, F#55, G55, A55, B55, C56, D56, E56, F#56, G56, A56, B56, C57, D57, E57, F#57, G57, A57, B57, C58, D58, E58, F#58, G58, A58, B58, C59, D59, E59, F#59, G59, A59, B59, C60, D60, E60, F#60, G60, A60, B60, C61, D61, E61, F#61, G61, A61, B61, C62, D62, E62, F#62, G62, A62, B62, C63, D63, E63, F#63, G63, A63, B63, C64, D64, E64, F#64, G64, A64, B64, C65, D65, E65, F#65, G65, A65, B65, C66, D66, E66, F#66, G66, A66, B66, C67, D67, E67, F#67, G67, A67, B67, C68, D68, E68, F#68, G68, A68, B68, C69, D69, E69, F#69, G69, A69, B69, C70, D70, E70, F#70, G70, A70, B70, C71, D71, E71, F#71, G71, A71, B71, C72, D72, E72, F#72, G72, A72, B72, C73, D73, E73, F#73, G73, A73, B73, C74, D74, E74, F#74, G74, A74, B74, C75, D75, E75, F#75, G75, A75, B75, C76, D76, E76, F#76, G76, A76, B76, C77, D77, E77, F#77, G77, A77, B77, C78, D78, E78, F#78, G78, A78, B78, C79, D79, E79, F#79, G79, A79, B79, C80, D80, E80, F#80, G80, A80, B80, C81, D81, E81, F#81, G81, A81, B81, C82, D82, E82, F#82, G82, A82, B82, C83, D83, E83, F#83, G83, A83, B83, C84, D84, E84, F#84, G84, A84, B84, C85, D85, E85, F#85, G85, A85, B85, C86, D86, E86, F#86, G86, A86, B86, C87, D87, E87, F#87, G87, A87, B87, C88, D88, E88, F#88, G88, A88, B88, C89, D89, E89, F#89, G89, A89, B89, C90, D90, E90, F#90, G90, A90, B90, C91, D91, E91, F#91, G91, A91, B91, C92, D92, E92, F#92, G92, A92, B92, C93, D93, E93, F#93, G93, A93, B93, C94, D94, E94, F#94, G94, A94, B94, C95, D95, E95, F#95, G95, A95, B95, C96, D96, E96, F#96, G96, A96, B96, C97, D97, E97, F#97, G97, A97, B97, C98, D98, E98, F#98, G98, A98, B98, C99, D99, E99, F#99, G99, A99, B99, C100, D100, E100, F#100, G100, A100, B100, C101, D101, E101, F#101, G101, A101, B101, C102, D102, E102, F#102, G102, A102, B102, C103, D103, E103, F#103, G103, A103, B103, C104, D104, E104, F#104, G104, A104, B104, C105, D105, E105, F#105, G105, A105, B105, C106, D106, E106, F#106, G106, A106, B106, C107, D107, E107, F#107, G107, A107, B107, C108, D108, E108, F#108, G108, A108, B108, C109, D109, E109, F#109, G109, A109, B109, C110, D110, E110, F#110, G110, A110, B110, C111, D111, E111, F#111, G111, A111, B111, C112, D112, E112, F#112, G112, A112, B112, C113, D113, E113, F#113, G113, A113, B113, C114, D114, E114, F#114, G114, A114, B114, C115, D115, E115, F#115, G115, A115, B115, C116, D116, E116, F#116, G116, A116, B116, C117, D117, E117, F#117, G117, A117, B117, C118, D118, E118, F#118, G118, A118, B118, C119, D119, E119, F#119, G119, A119, B119, C120, D120, E120, F#120, G120, A120, B120, C121, D121, E121, F#121, G121, A121, B121, C122, D122, E122, F#122, G122, A122, B122, C123, D123, E123, F#123, G123, A123, B123, C124, D124, E124, F#124, G124, A124, B124, C125, D125, E125, F#125, G125, A125, B125, C126, D126, E126, F#126, G126, A126, B126, C127, D127, E127, F#127, G127, A127, B127, C128, D128, E128, F#128, G128, A128, B128, C129, D129, E129, F#129, G129, A129, B129, C130, D130, E130, F#130, G130, A130, B130, C131, D131, E131, F#131, G131, A131, B131, C132, D132, E132, F#132, G132, A132, B132, C133, D133, E133, F#133, G133, A133, B133, C134, D134, E134, F#134, G134, A134, B134, C135,

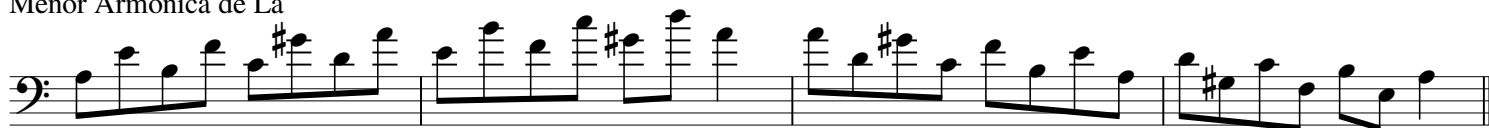
Menor Armónica de M1

Euphonium  
Fifths  
1 Octave

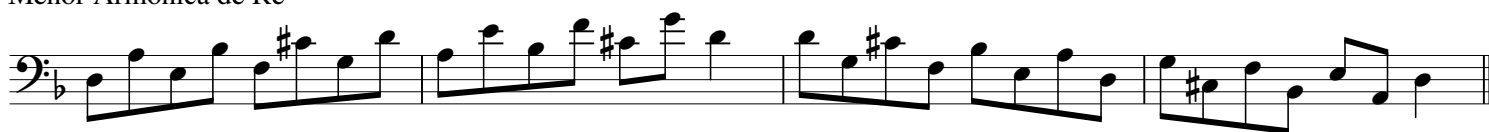
Euphonium  
Fünftel  
1 Oktave

Eufono  
Quintas  
1 Octava

Menor Armónica de La



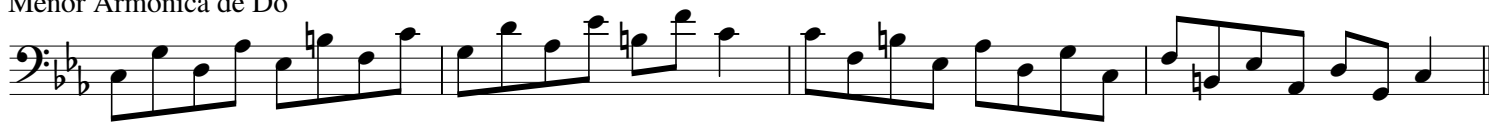
Menor Armónica de Re



Menor Armónica de Sol



Menor Armónica de Do



Menor Armónica de Fa



Menor Armónica de Sib



Eufono  
Quintas  
1 Octava

[illegible]

Menor Armónica de La $\flat$

A musical score for a single melodic line on a five-line staff. The key signature consists of four flats (B-flat, E-flat, A-flat, D-flat), indicating a minor mode. The melody begins with a half note G3, followed by quarter notes F#3, E3, and D3. It continues with eighth-note pairs (F#3-G3, E3-F#3) and quarter notes (D3-E3, C3-D3). The piece concludes with a final whole note G3.

Menor Armónica de Do#m

Menor Armonica de Fa#

A musical score for a single melodic line on a five-line staff. The key signature is two sharps (F# and C#), indicated by a key signature symbol at the beginning. The time signature is not explicitly shown but appears to be 4/4 based on the note values. The melody consists of 16 notes: F#4, G#4, A5, B5, C#6, D6, E6, F#6, G#6, A6, B6, C#7, D7, E7, F#7, and G#7. The notes are grouped into four measures of four notes each. The first measure has a red highlight under the first two notes (F#4 and G#4). The second measure has a red highlight under the last two notes (E6 and F#6). The third measure has a red highlight under the first two notes (G#6 and A6). The fourth measure has a red highlight under the last two notes (E7 and F#7). The piece ends with a double bar line.

Menor Armónica de Si

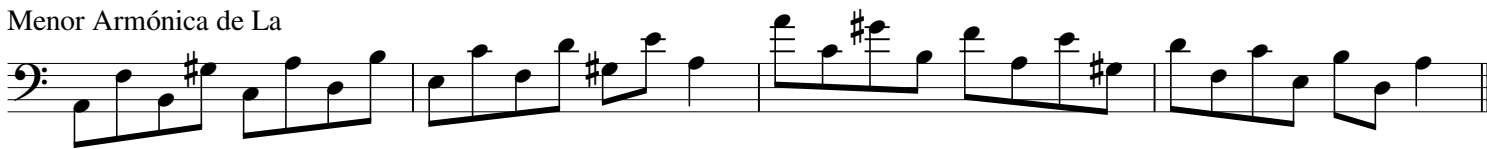
Mejor Armonica de M<sup>a</sup>

Euphonium  
Sixths  
1 Octave

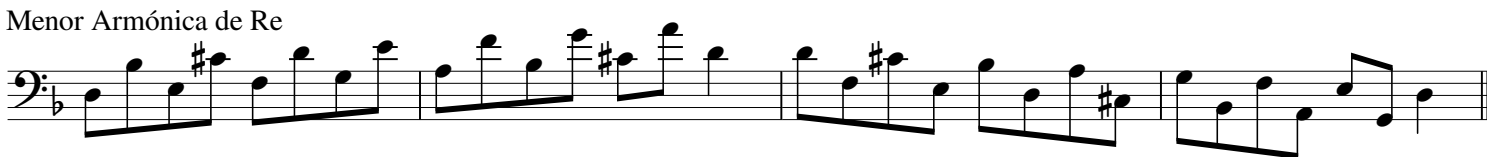
Euphonium  
Sechstel  
1 Oktave

Eufono  
Sextas  
1 Octava

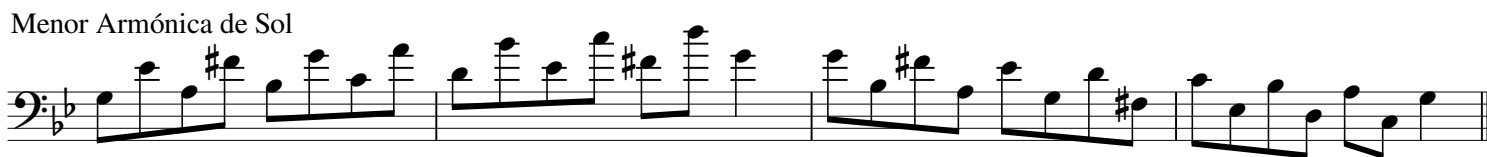
Menor Armónica de La



Menor Armónica de Re



Menor Armónica de Sol



Menor Armónica de Do



Menor Armónica de Fa



Menor Armónica de Si

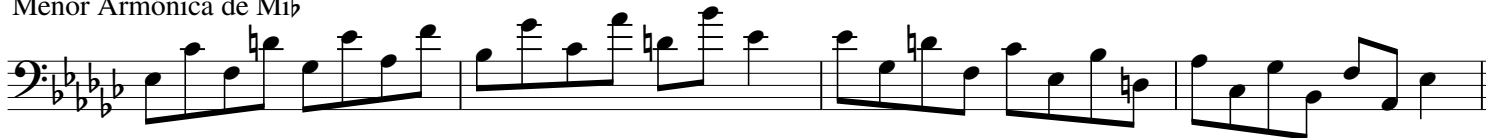


Euphonium  
Sixths  
1 Octave

Euphonium  
Sechstel  
1 Oktave

Eufono  
Sextas  
1 Octava

Menor Armónica de Mi $\flat$



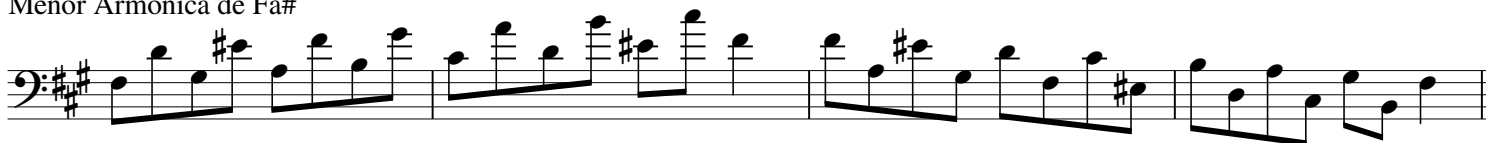
Menor Armónica de La $\flat$



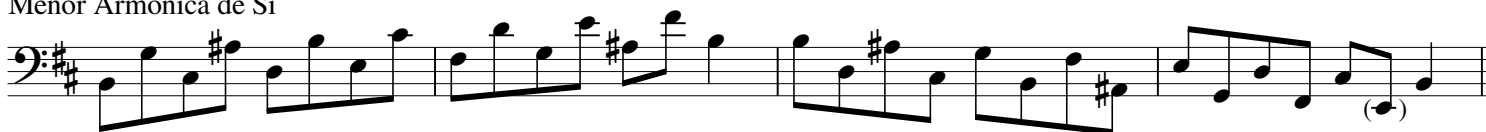
Menor Armónica de Do $\sharp$



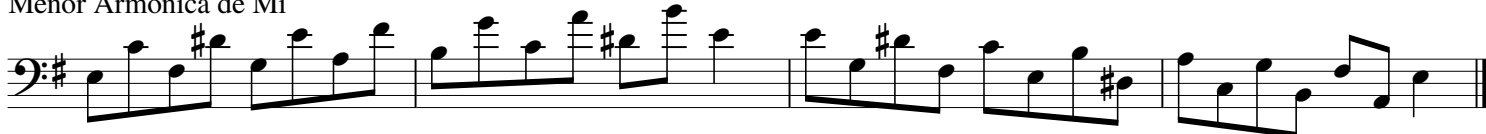
Menor Armónica de Fa $\sharp$



Menor Armónica de Si



Menor Armónica de Mi





Euphonium  
Sevenths  
1 Octave

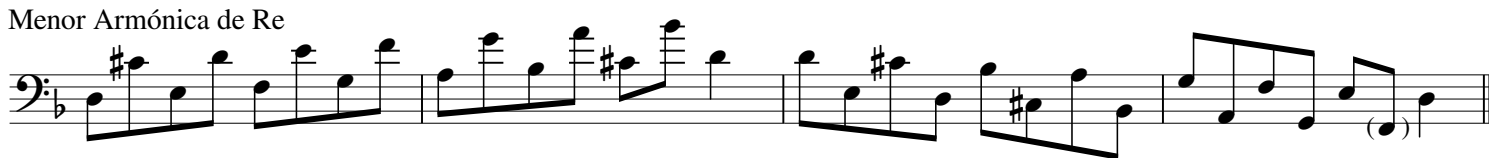
Euphonium  
Septimen  
1 Oktave

Eufono  
Séptimas  
1 Octava

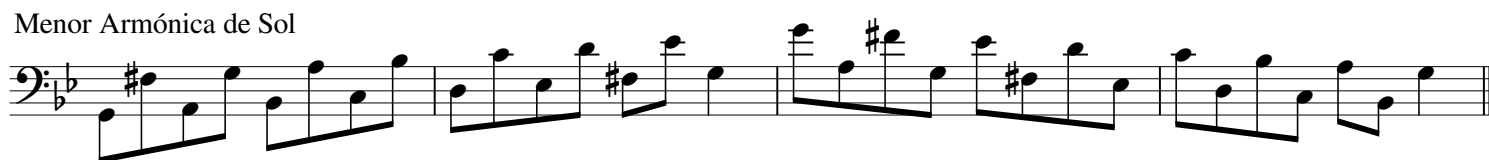
Menor Armónica de La



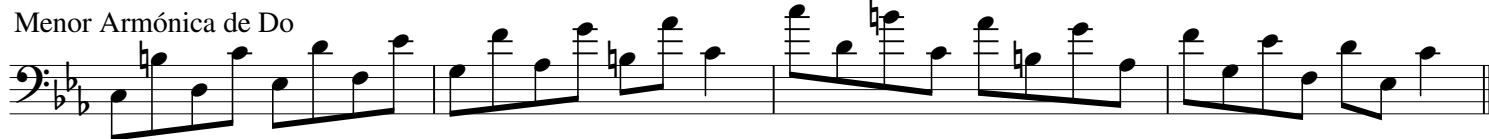
Menor Armónica de Re



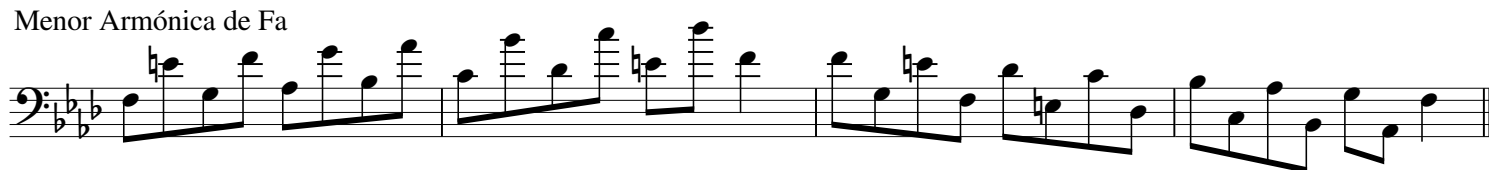
Menor Armónica de Sol



Menor Armónica de Do



Menor Armónica de Fa



Menor Armónica de Si

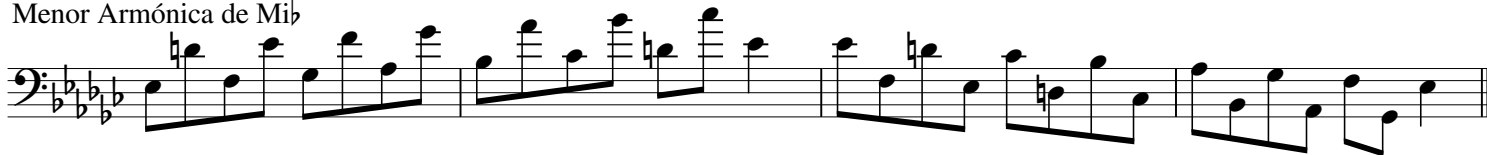


Euphonium  
Sevenths  
1 Octave

Euphonium  
Septimen  
1 Oktave

Eufono  
Séptimas  
1 Octava

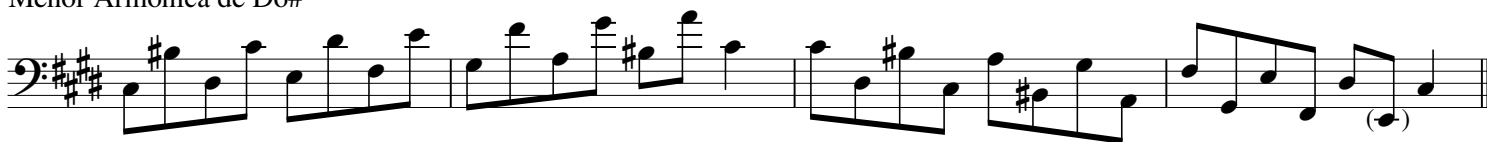
Menor Armónica de Mi $\flat$



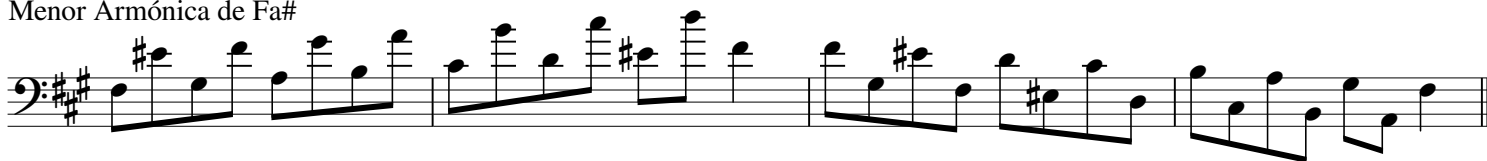
Menor Armónica de La $\flat$



Menor Armónica de Do $\sharp$



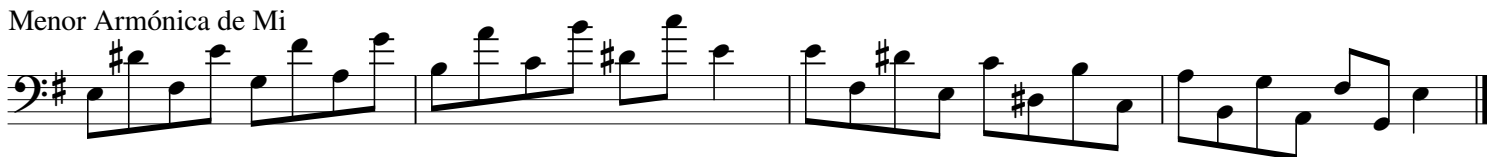
Menor Armónica de Fa $\sharp$



Menor Armónica de Si



Menor Armónica de Mi



Euphonium  
Harmonic Minor Scales  
2 Octaves

Euphonium  
Harmonischen Moll-Tonleitern  
2 Oktaven

Eufono  
Escalas Menores Armónicas  
2 Octavas

Menor Armónica de La



Menor Armónica de Re



Menor Armónica de Sol



Menor Armónica de Do



Menor Armónica de Fa



Menor Armónica de Sib



Euphonium  
Harmonic Minor Scales  
2 Octaves

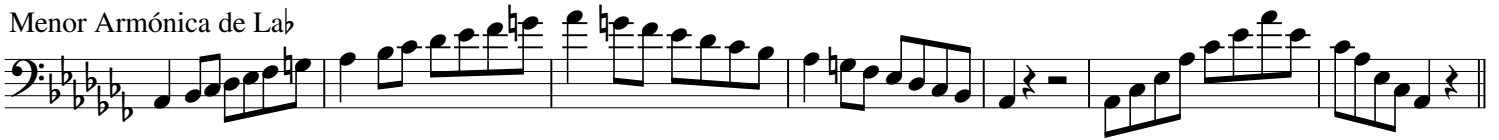
Euphonium  
Harmonischen Moll-Tonleitern  
2 Oktaven

Eufono  
Escalas Menores Armónicas  
2 Octavas

Menor Armónica de Mi $\flat$



Menor Armónica de La $\flat$



Menor Armónica de Do $\sharp$



Menor Armónica de Fa $\sharp$



Menor Armónica de Si



Menor Armónica de Mi



Euphonium  
Thirds  
2 Octaves

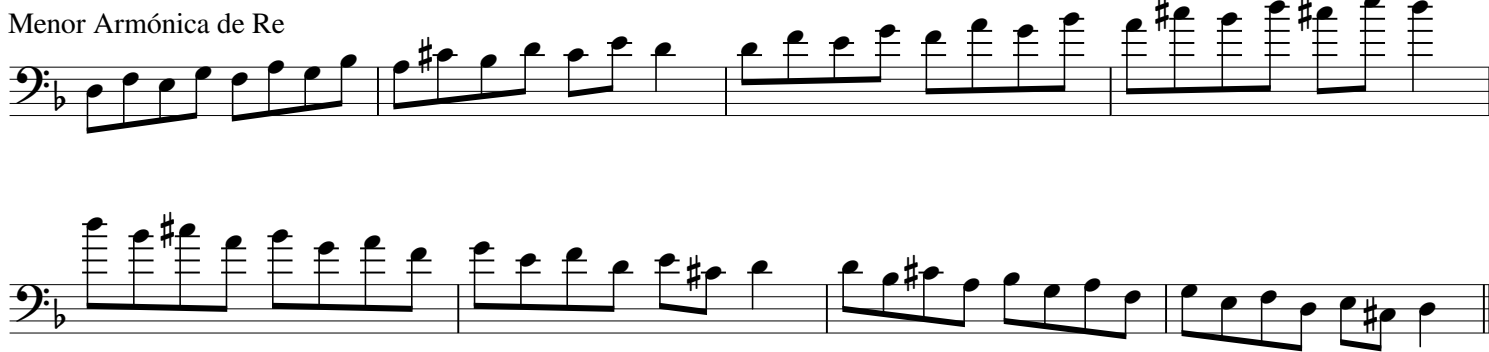
Euphonium  
Drittel  
2 Oktaven

Eufono  
Terceras  
2 Octavas

Menor Armónica de La



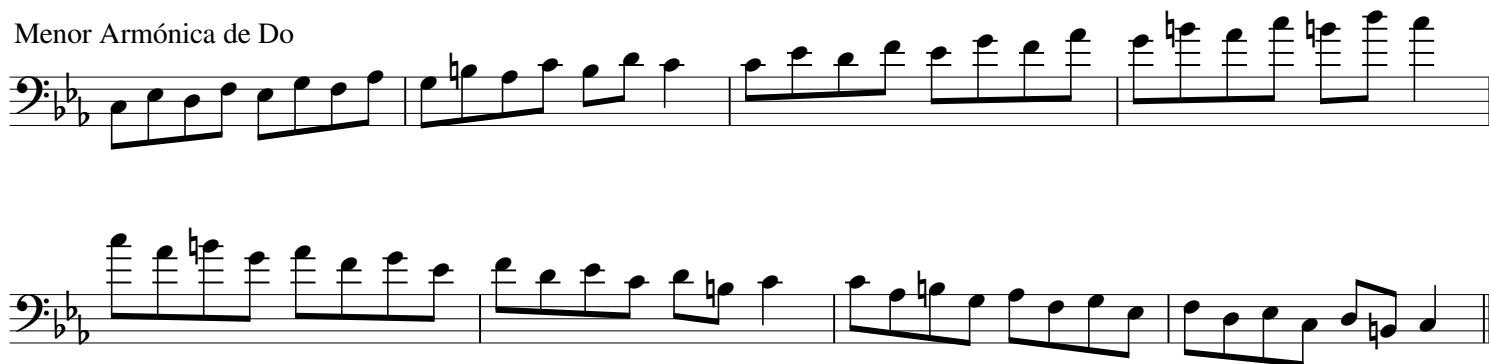
Menor Armónica de Re



Menor Armónica de Sol



Menor Armónica de Do



Euphonium  
Thirds  
2 Octaves

Euphonium  
Drittel  
2 Oktaven

Eufono  
Terceras  
2 Octavas

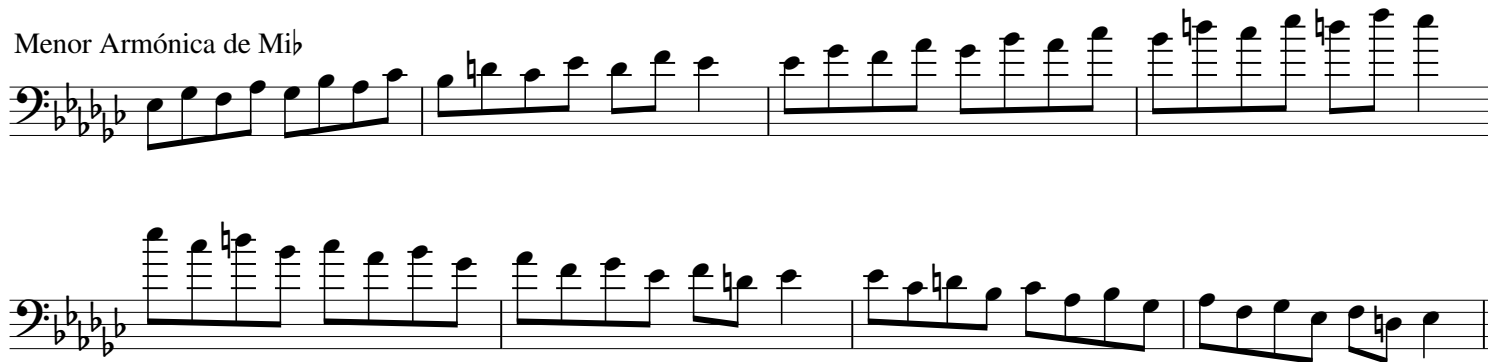
Menor Armónica de Fa



Menor Armónica de Sib



Menor Armónica de Mib



Menor Armónica de Lab

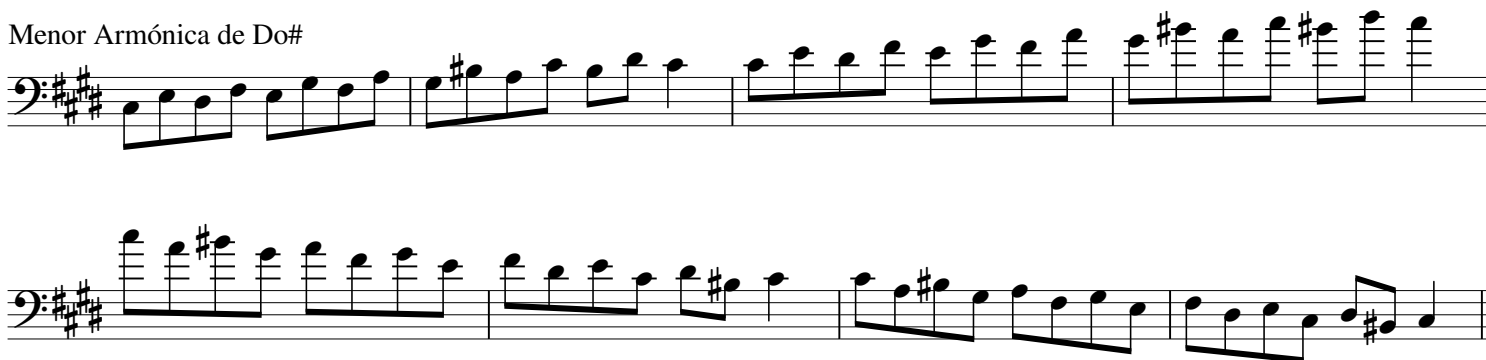


Euphonium  
Thirds  
2 Octaves

Euphonium  
Drittel  
2 Oktaven

Eufono  
Terceras  
2 Octavas

Menor Armónica de Do#



Menor Armónica de Fa#



Menor Armónica de Si



Menor Armónica de Mi

