

Cello
Octatonic Scales
1 Octave

Violoncello
Oktatonischen Tonleitern
1 Oktave

Violoncelle
Gammes Octatoniques
1 Octave

C Octatonic (Half-Whole)



C Octatonic (Whole-Half)



C# Octatonic (Half-Whole)



C# Octatonic (Whole-Half)



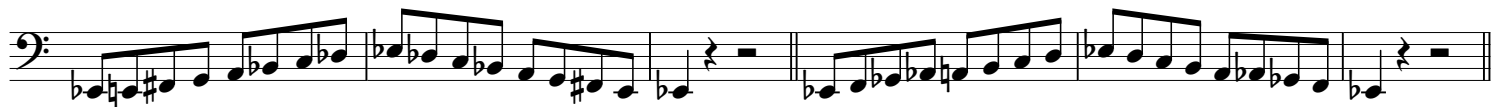
D Octatonic (Half-Whole)



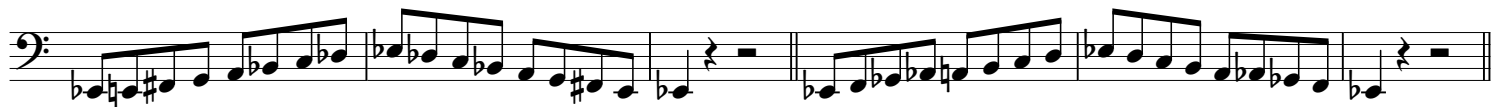
D Octatonic (Whole-Half)



E♭ Octatonic (Half-Whole)



E♭ Octatonic (Whole-Half)



E Octatonic (Half-Whole)



E Octatonic (Whole-Half)



F Octatonic (Half-Whole)



F Octatonic (Whole-Half)



Cello
Octatonic Scales
1 Octave

Violoncello
Oktatonischen Tonleitern
1 Oktave

Violoncelle
Gammes Octatoniques
1 Octave

F# Octatonic (Half-Whole)

F# Octatonic (Whole-Half)



G Octatonic (Half-Whole)

G Octatonic (Whole-Half)



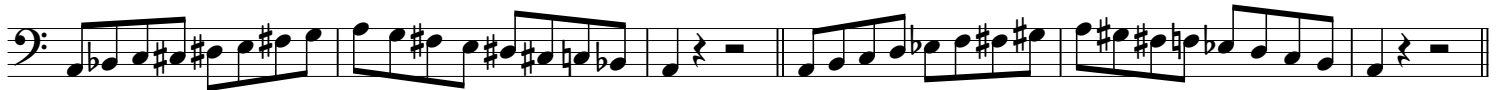
Ab Octatonic (Half-Whole)

Ab Octatonic (Whole-Half)



A Octatonic (Half-Whole)

A Octatonic (Whole-Half)



Bb Octatonic (Half-Whole)

Bb Octatonic (Whole-Half)



B Octatonic (Half-Whole)

B Octatonic (Whole-Half)



Cello
Octatonic Scales
2 Octaves

Violoncello
Oktatonischen Tonleitern
2 Oktaven

Violoncelle
Gammes Octatoniques
2 Octaves

C Octatonic (Half-Whole)



C Octatonic (Whole-Half)



C# Octatonic (Half-Whole)



C# Octatonic (Whole-Half)



D Octatonic (Half-Whole)



D Octatonic (Whole-Half)



E♭ Octatonic (Half-Whole)



E♭ Octatonic (Whole-Half)



Cello
Octatonic Scales
2 Octaves

Violoncello
Oktatonischen Tonleitern
2 Oktaven

Violoncelle
Gammes Octatoniques
2 Octaves

E Octatonic (Half-Whole)



E Octatonic (Whole-Half)



F Octatonic (Half-Whole)



F Octatonic (Whole-Half)



F# Octatonic (Half-Whole)



F# Octatonic (Whole-Half)



G Octatonic (Half-Whole)



G Octatonic (Whole-Half)



Cello
Octatonic Scales
2 Octaves

Violoncello
Oktatonischen Tonleitern
2 Oktaven

Violoncelle
Gammes Octatoniques
2 Octaves

A \flat Octatonic (Half-Whole)



A \flat Octatonic (Whole-Half)



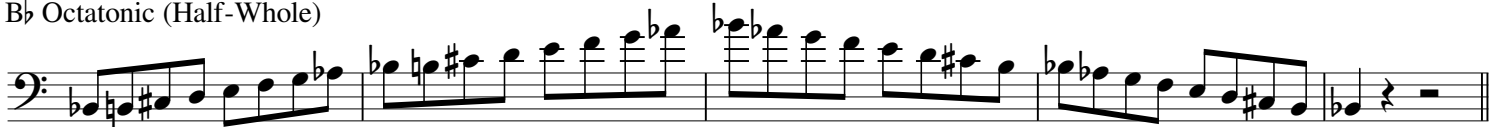
A Octatonic (Half-Whole)



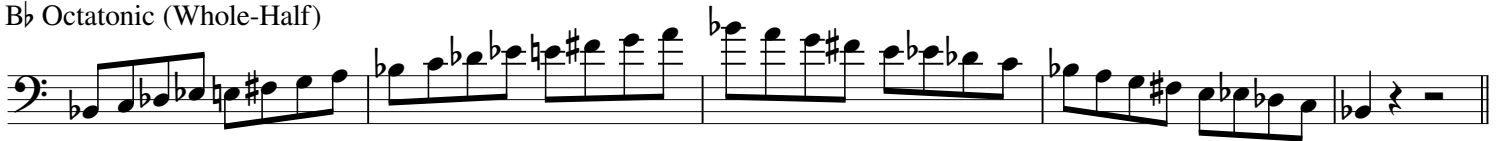
A Octatonic (Whole-Half)



B \flat Octatonic (Half-Whole)



B \flat Octatonic (Whole-Half)



B Octatonic (Half-Whole)



B Octatonic (Whole-Half)

