

Flute  
Octatonic Scales  
1 Octave

Flöte  
Oktatonischen Tonleitern  
1 Oktave

Flûte  
Gammes Octatoniques  
1 Octave

C Octatonic (Half-Whole)



C Octatonic (Whole-Half)



C# Octatonic (Half-Whole)



C# Octatonic (Whole-Half)



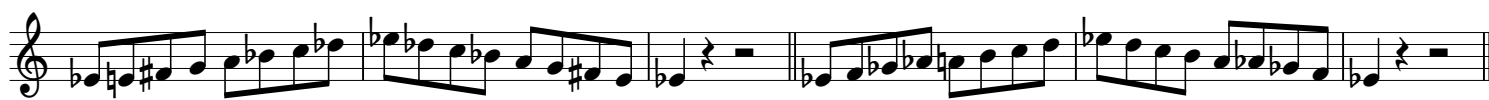
D Octatonic (Half-Whole)



D Octatonic (Whole-Half)



Eb Octatonic (Half-Whole)



Eb Octatonic (Whole-Half)



E Octatonic (Half-Whole)



E Octatonic (Whole-Half)



F Octatonic (Half-Whole)



F Octatonic (Whole-Half)



Flute  
Octatonic Scales  
1 Octave

Flöte  
Oktatonischen Tonleitern  
1 Oktave

Flûte  
Gammes Octatoniques  
1 Octave

F# Octatonic (Half-Whole)

F# Octatonic (Whole-Half)



G Octatonic (Half-Whole)

G Octatonic (Whole-Half)



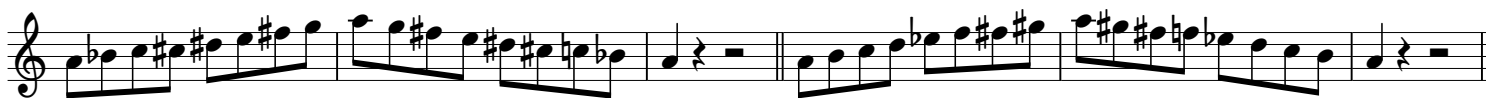
Ab Octatonic (Half-Whole)

Ab Octatonic (Whole-Half)



A Octatonic (Half-Whole)

A Octatonic (Whole-Half)



Bb Octatonic (Half-Whole)

Bb Octatonic (Whole-Half)



B Octatonic (Half-Whole)

B Octatonic (Whole-Half)



Flute  
Octatonic Scales  
2 Octaves

Flöte  
Oktatonischen Tonleitern  
2 Oktaven

Flûte  
Gammes Octatoniques  
2 Octaves

C Octatonic (Half-Whole)



C Octatonic (Whole-Half)



C# Octatonic (Half-Whole)



C# Octatonic (Whole-Half)



D Octatonic (Half-Whole)



D Octatonic (Whole-Half)



Eb Octatonic (Half-Whole)



Eb Octatonic (Whole-Half)



Flute  
Octatonic Scales  
2 Octaves

Flöte  
Oktatonischen Tonleitern  
2 Oktaven

Flûte  
Gammes Octatoniques  
2 Octaves

E Octatonic (Half-Whole)



E Octatonic (Whole-Half)



F Octatonic (Half-Whole)



F Octatonic (Whole-Half)



F# Octatonic (Half-Whole)



F# Octatonic (Whole-Half)



G Octatonic (Half-Whole)

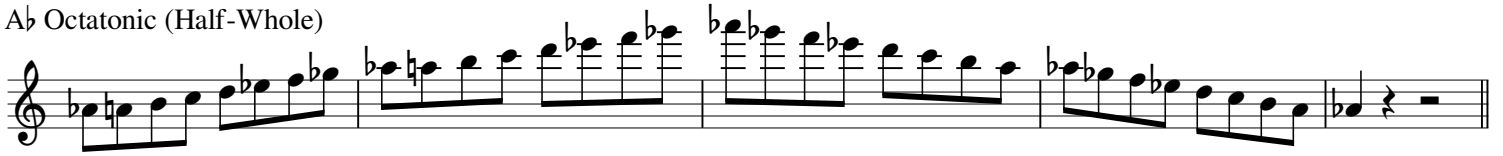


G Octatonic (Whole-Half)

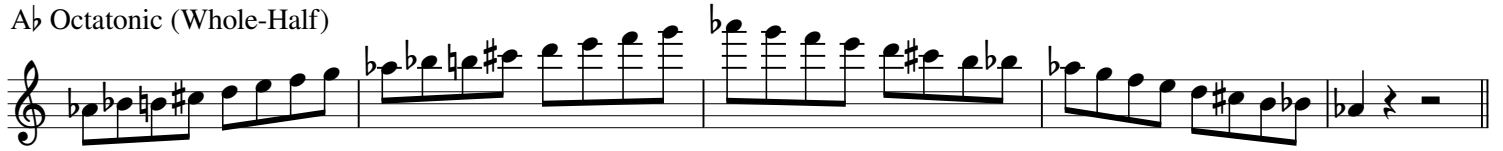


Flute	Flöte	Flûte
Octatonic Scales	Oktatonischen Tonleitern	Gammes Octatoniques
2 Octaves	2 Oktaven	2 Octaves

A $\flat$  Octatonic (Half-Whole)



A $\flat$  Octatonic (Whole-Half)



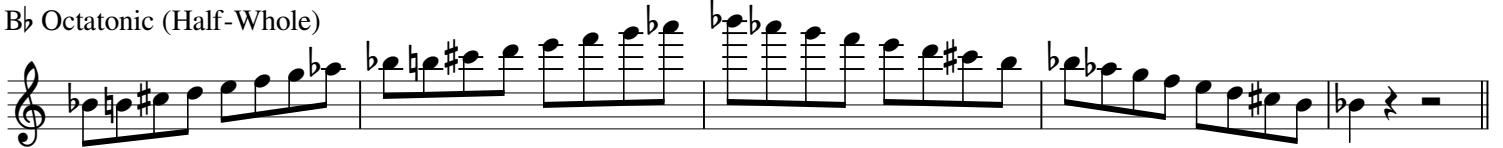
A Octatonic (Half-Whole)



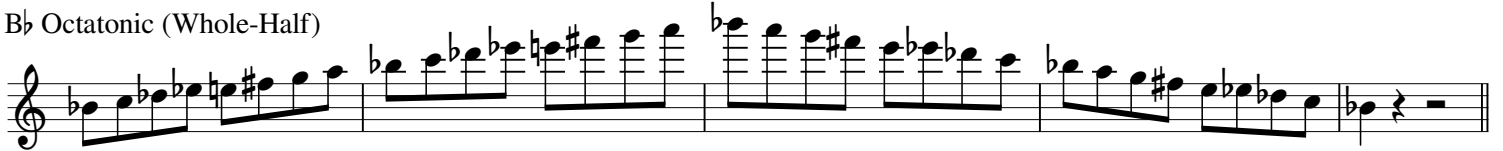
A Octatonic (Whole-Half)



B $\flat$  Octatonic (Half-Whole)



B $\flat$  Octatonic (Whole-Half)



B Octatonic (Half-Whole)



B Octatonic (Whole-Half)

